

The Mayor of London's School Air Quality Audit Programme

St Stephen's Church of England Primary School, London
Borough of Richmond Upon Thames





Mayor's Foreword

Poor air quality is a major public health issue and cause of inequality in our city. It is shocking that in London alone, air pollution contributes to thousands of early deaths every year, and has been linked to strokes, heart attacks, asthma, dementia and smaller lungs in our children.

We cannot allow this to continue. That is why, since becoming Mayor, I have made tackling poor air quality a priority. That is also why my administration has nearly doubled spending on cleaning up London's toxic air and we are delivering the boldest and most ambitious plan to tackle air quality anywhere in the world.

This includes introducing a new charge on the oldest, most polluting vehicles coming into central London, consulting on expanding the Ultra Low Emission Zone, making buses in London cleaner and greener, and reducing exposure to air pollution around schools.

As part of this, we launched the Mayor's School Air Quality Audit Programme in January 2017, with the aim of reducing emissions and primary school children's exposure to polluted air. I am delighted that this programme has now been completed, with 50 audits undertaken at primary schools located in the most polluted areas of London.

We are confident that implementing the recommendations from these audits will go a long way to delivering cleaner air, reducing health inequalities and, most importantly, improving the health and wellbeing of our children.

But we want to go even further. The implementation of the recommendations and dissemination of this programme offers us an invaluable opportunity to really make a difference. So, I want to see the London boroughs rolling it out to every school located in pollution hot spots.

The audit recommendations for the 50 schools that have already gone through the process are bespoke to each school, and whilst some recommendations will require funding to implement, there will be some that will not; such as changing walking routes to less exposed routes. Each report also contains a tool kit and template that could be used locally by other schools and similar organisations to undertake their own air quality audit.

We understand that schools and boroughs are under enormous financial pressure, which is why I am encouraging boroughs to prioritise funding through their Local Implementation Plan budgets provided by Transport for London (TfL). I am also urging Clinical Commissioning Groups and local businesses to consider setting aside some funding to support the funding of these recommendations.

In addition, we are keen to encourage schools to sign up to TfL's STARS (Sustainable Travel: Active, Responsible, Safe) programme, if they have not already done so. By swapping car journeys for active travel, through STARS, schools can make a real difference to our city and help create healthier streets for Londoners.

Finally, I would like to commend all those involved in the successful delivery of the School Air Quality Audit Programme - the schools, boroughs, consultants and, above all, the school children.

A handwritten signature in blue ink, appearing to read 'Sadiq Khan', with a small number '2' written below the name.

Sadiq Khan
Mayor of London

THE MAYOR OF LONDON'S SCHOOL AIR QUALITY AUDIT PROGRAMME

St Stephen's Church of England Primary School, London Borough of Richmond Upon Thames



ACKNOWLEDGEMENTS & CONTRIBUTIONS

St Stephen's Church of England Primary School – Shelagh Couatts (School Business Manager)

London Borough of Richmond upon Thames – Carol Lee (Senior Environmental Health Pollution Practitioner - Air Quality), Lindi Louw (School Travel Plan)

MEMBERS OF THE PROGRAMME STEERING GROUP

Annette Figueiredo- Programme Lead, Principal Policy & Programme Officer, Greater London Authority
Bruce McVean - Principal Strategy Planner – Walking, Transport for London
Oli Turk – Schools and Young People Project Manager, Transport for London
Paula Martin- Air Quality Analyst, Transport for London
Kate Findlay, City Planner, Transport for London
Susan Crisp - Schools Places Strategy Delivery Manager, Greater London Authority
Liz Prosser - Senior Project Officer - Healthy Schools London, Greater London Authority
Rebecca Roper - Policy & Programme Officer, Greater London Authority
Ben Connor - Senior Policy & Programmes Officer, Greater London Authority
Sarah Morris- Graduate Intern, Transport for London
Robert Sambrooks, Customer Marketing & Behaviour Change Executive, Transport for London

DISCLAIMER

The contents of this report and its recommendations are principally based on the findings of the independent audit as of the date it was undertaken, and may not account for subsequent changes in local policy, conditions and/or circumstances in and/or around the school.

Supplier



Glenn Higgs, Associate Director, Project Director, WSP
Matt Croucher, Sustainable Transport, Project Manager, WSP
Justin Lingard, Air Quality, WSP
Paddy Pope, Sustainable Places & Energy, WSP
Mark Cottray, Principal Transport Planner, Auditor, WSP

COPYRIGHT

**Greater London Authority
May 2018**

Published by
Greater London Authority
City Hall
The Queen's Walk
More London
London SE1 2AA
www.london.gov.uk
enquiries 020 7983 4000
minicom 020 7983 4458
ISBN
Photographs ©

Copies of this report are available
from www.london.gov.uk

CONTENTS

| | | |
|----------|---|-----------|
| 1 | INTRODUCTION | 1 |
| 1.1 | BACKGROUND | 1 |
| 1.2 | OBJECTIVES | 4 |
| 2 | AUDIT APPROACH | 7 |
| 2.2 | AUDIT SCHEDULE - ST STEPHEN' S CHURCH OF ENGLAND PRIMARY SCHOOL | 9 |
| 3 | CONTEXT AND INITIATIVES | 13 |
| 3.1 | SCHOOL CONTEXT | 13 |
| 3.2 | PLANNED SCHEMES & RECENT INITIATIVES | 17 |
| 4 | AUDIT FINDINGS: SOURCES OF EMISSIONS & EXPOSURE | 23 |
| 4.1 | INTRODUCTION | 23 |
| 4.2 | AIR QUALITY IN THE SURROUNDING AREA | 23 |
| 4.3 | HIGHWAYS - KEY OBSERVATIONS | 26 |
| 4.4 | SCHOOL GROUNDS / BUILDING - KEY OBSERVATIONS | 28 |
| 4.5 | KEY OBSERVATIONS - SUMMARY OF ISSUES | 31 |
| 5 | RECOMMENDATIONS | 35 |
| 5.1 | DEVELOPING THE RECOMMENDATIONS | 35 |
| 5.2 | KEY RECOMMENDATIONS - SUMMARY OF MEASURES | 43 |
| 5.3 | PRIORITISED MEASURES FOR THE SCHOOL | 44 |
| 5.4 | STARS ACCREDITATION SCHEME FOR SCHOOLS | 46 |
| 5.5 | HEALTHY SCHOOLS LONDON | 47 |
| 5.6 | AIR QUALITY ALERTS | 47 |
| 5.7 | ENGAGEMENT | 48 |
| 5.8 | FUNDING OPPORTUNITIES | 50 |
| 5.9 | MONITORING | 55 |
| 6 | NEXT STEPS | 58 |

TABLES

| | |
|---|----|
| Table 1 - Audit Details | 9 |
| Table 2 – Recommended measures for considerations | 37 |
| Table 3 - STARS Scheme Accreditation Requirements | 46 |

FIGURES

| | |
|--|----|
| Figure 1 – Overview of Approach | 7 |
| Figure 2 – Key elements of the Audit | 8 |
| Figure 3 - Outer Context Plan | 15 |
| Figure 4 - Inner Context Plans | 16 |
| Figure 5 - Localised Air Quality modelling around St Clements Primary School | |
| Figure 6 - Road Transport NO _x Emissions and Volumes | 24 |
| Figure 7 - Air Pollution in the surrounding areas | 25 |
| Figure 8 - Summary Issues Map | 31 |
| Figure 9 - Summary Recommendations Map | 43 |
| Figure 10 – Summary of funding opportunities | 50 |

APPENDICES

| | |
|---|--|
| Appendix A – The Mayor's commitment to improving air quality: Key Documents | |
| Appendix B - Audit template | |
| Appendix C - Engagement material | |
| Appendix D –Toolkit Summary | |

Chapter 1 – Introduction

1 INTRODUCTION

1.1 BACKGROUND

- 1.1.1. As part of the Mayor's ambition to tackle poor air quality, WSP has been commissioned to identify a combination of hard-hitting measures and quick-win solutions to help protect pupils' health from toxic air quality, and examine new ways to lower emissions and exposure to pollution in and around primary schools.
- 1.1.2. The Mayor has stated that London is experiencing a '*public health crisis*', and that he is committed to improving air quality, particularly for the most vulnerable Londoners. Over 400 primary schools are located in areas which exceed legal pollution limits, and 25% of primary schools are in areas with dangerously high levels of air pollution.
- 1.1.3. Primary school children are amongst the most vulnerable of the at risk groups, as their lungs are still developing, and toxic air can stunt their growth, causing significant health problems in later life.
- 1.1.4. Road transport is a major contributor to emissions, has a significant impact on air quality, accounting for around half of NO_x emissions. Whilst private car use is decreasing, congestion is increasing¹. Without significant intervention, as the Capital grows rapidly these trends are set to continue.



- 1.1.5. In response the Mayor is implementing a significant programme of measures, including bold proposals to reduce London's deadly air pollution and protect the health and wellbeing of all Londoners, including:

¹ London Assembly, London stalling: Reducing traffic congestion in London, January 2017, Transport for London, Travel in London - Report 9 data, 2017

- **The Toxicity Charge (T-Charge)** now applies to older, more polluting vehicles in central London, which means that including the Congestion Charge drivers with these vehicles will now pay £21.50 total during peak congestion.
- **Cleaning up London's Buses** - The Mayor is spending more than £300 million to transform London's bus fleet by retrofitting thousands of buses and committing to phase out pure diesel double deck buses from 2018. 12 Low Emission Bus Zones have been announced, two of which have already been delivered, putting the greenest buses on the capital's most polluted routes. The zones are expected to reduce NO_x emissions by 84 per cent and thousands of school children in these areas will benefit from cleaner air.
- **The Ultra Low Emission Zone (ULEZ)** will supersede the T-Charge, and operate 24 hours a day, 7 days a week within the same area as the current Congestion Charging Zone (CCZ). The world's first Ultra Low Emission Zone (ULEZ) is to start 8 April 2019, approximately 17 months earlier than planned, and create stricter emissions standards for diesel vehicles, 24 hours, 7 days a week. Those that do not comply will face a charge. This is expected to reduce harmful NO_x (Nitrogen Oxides) emissions by about 50 per cent in central London, 40 per cent in inner London and 30 per cent in outer London.
- **Expanding the ULEZ and tightening the Low Emission Zone (LEZ)** - As part of the Mayor's pledge to help improve air quality and health for all Londoners, he is also proposing to make the London-wide Low Emission Zone (LEZ) stronger, and expand the Ultra Low Emission Zone (ULEZ) requirements for vehicles. This involves introducing a Euro 6 emissions standard London-wide for heavy duty vehicles (i.e. buses, coaches, Heavy Goods Vehicles (HGVs) vehicles) from 26 October 2020, and expanding the ULEZ for light duty vehicles (i.e. cars, vans and motorcycles) so that all vehicles are subject to emissions standards within an area roughly bounded by the North and South Circular Roads from 25 October 2021. The introduction and expansion of the ULEZ, and tightening of the LEZ standards, is forecast to result in a significant reduction in NO_x emissions across London.
- **London's taxis** – New taxis licensed after 1 January 2018 will need to be zero emission capable to help clean up London's dirty air, with new 'zero emission' ranks for drivers who pioneer green technology alongside a network of rapid electric charge points.
- **Low emission neighbourhoods** – five low emission neighbourhoods have been founded across London to pioneer bold new measures to promote the use of low emission vehicles and improve local air quality, including low emission vehicle only streets, measures to promote deliveries by cycle cargo bikes and low emission vehicles, and bold proposals to promote walking and cycling.
- **The London Environment Strategy** – is a bold and ambitious strategy, with a particular focus on air quality. The strategy was consulted on in 2017 and will be published in 2018, and seeks to address the most urgent environmental challenges facing our London, to safeguard its environment over the longer term. This will be the first strategy to bring together approaches to every aspect of London's environment, including: air quality, green infrastructure, climate change mitigation and energy.

- **The Draft London Plan** - published in November 2017, places a considerable emphasis on air quality, with policy S|1 stating that London's air quality should be significantly improved, and exposure to poor air quality, especially for vulnerable people, should be reduced. The aim of this policy is to ensure that new developments are designed and built, as far as is possible, to improve local air quality and reduce the extent to which the public are exposed to poor air quality. This means that new developments, as a minimum, must not cause new exceedances of legal air quality standards, or delay the date at which compliance will be achieved in areas that are currently in exceedance of legal limits. Where legal limits are already met, or are predicted to be met at the time of completion, new developments must endeavour to maintain the best ambient air quality compatible with sustainable development principles. The draft London plan also highlights the importance of creating new, accessible green open space, particularly in areas where this access is lacking. The Mayor is providing funding through his Greener City Fund to create and improve green spaces and to plant trees, including in schools. A proposed new Urban Greening Factor seeks to encourage major new developments to contribute to the greening of London by incorporating measures such as green roofs, tree planting and green walls.
- **Healthy Streets Approach** - the Mayor is embedding the 'Healthy Streets' approach in transport strategy. This promotes a holistic approach that can fulfill multiple objectives such as improving the health, liveability, social cohesion and economic prosperity of an area.
- **The Mayor's Transport Strategy 2018** - The Mayor has set out ambitious plans to improve transport in London over the next 25 years in his draft Transport Strategy, which will act as the backbone of transport planning across London, helping to deliver The Mayor's ambition for 80% of trips in London to be made on foot, by cycle or using public transport by 2041. It includes record investment in new and improved rail, tube and bus services, an unprecedented focus on walking and cycling, and a commitment to make the entire transport system zero-emission by 2050.

1.1.6. These measures in combination will dramatically improve London's air quality. However, the Mayor also wanted to take early action at 50 primary schools located in areas with some of the highest air pollution levels, so has provided £250k funding to commission The Mayor of London's School Air Quality Audits programme, to identify **hard-hitting measures** to minimise the impacts of toxic air on primary school children in some of the worse affected areas across London. This is both in terms of **reducing the sources** of harmful emissions, as well as **reducing the exposure** to these emissions. The aim is to establish a robust process and toolkit of measures, which the London boroughs and primary schools can roll out, so that every school that is located in an area of high pollution can benefit from this approach.

1.2 OBJECTIVES

1.2.1. The key objectives of the Mayor of London's School Air Quality Audit Programme is to:

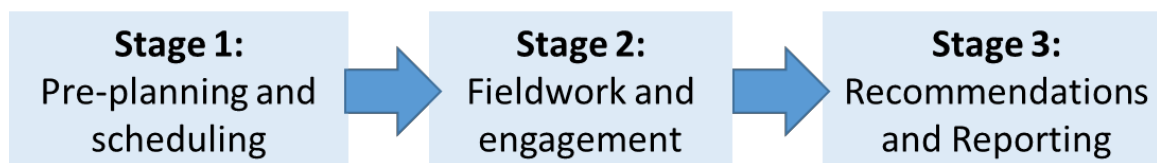
- Identify the sources of outdoor air quality and potential exposure by primary school children at the school and their surrounding catchment areas, and potential indoor exposure through the internal audits.
- Identify, evaluate and recommend a combination of hard hitting measures and pragmatic approaches, both within and around the school that will help a borough to reduce emissions or reduce primary school children's exposure to poor air quality at those sites, which could be delivered as part of the boroughs' Local Implementation Plan (LIP) funding schemes, as well as other sources of funding such Clinical Commissioning Groups, local businesses and charitable trusts.
- Engage school communities to educate stakeholders about the impacts of air pollution and contribute towards activities, initiatives and policies that the primary school community could implement.
- Engage eligible London boroughs and other relevant stakeholders to inform the feasibility of the proposed recommendations.
- Provide recommendations for the boroughs' consideration and future implementation, and wider dissemination.

Chapter 2 – Audit Approach

2 AUDIT APPROACH

2.1.1. The Mayor of London's School Air Quality Audits follow a structured approach, summarised in Figure 1.

Figure 1 – Overview of Approach



2.1.2. Each audits consists of broadly three key stages:

- **Stage 1:** Pre-planning and scheduling
- **Stage 2:** Fieldwork and engagement
- **Stage 3:** Recommendations and Reporting

Pre-planning and scheduling

2.1.3. The borough air quality primary contacts were contacted by the lead Auditor, and mutually available potential dates for the audit were agreed. The borough then introduced the auditor to the school, and a schedule for the tasks to be undertaken was agreed to fit in with the operations of the school and availability of key staff contributing to the audit.

2.1.4. Prior to the audit air quality modelling was undertaken for the area around the school, with an assessment of the contribution to emissions made by each vehicle type on the roads around the school.

2.1.5. A desktop review of the local areas around the school site, and the wider catchment was also undertaken, to highlight key features for the auditor to assess further on site. This includes sources of pollution, causes of exposure, and notable features in the local area which may have a bearing on the potential mitigation measures (i.e. bus routes, pedestrian crossing locations, nearby construction sites, physical barriers such as railways or rivers). The school's STARS2 travel plan progress was also reviewed for reference ahead of the audits. Engagement materials were developed for use in delivering bespoke awareness raising interactive presentations to the children. A toolkit of measures for addressing air quality issues was developed for use in informing our recommendations for each school.

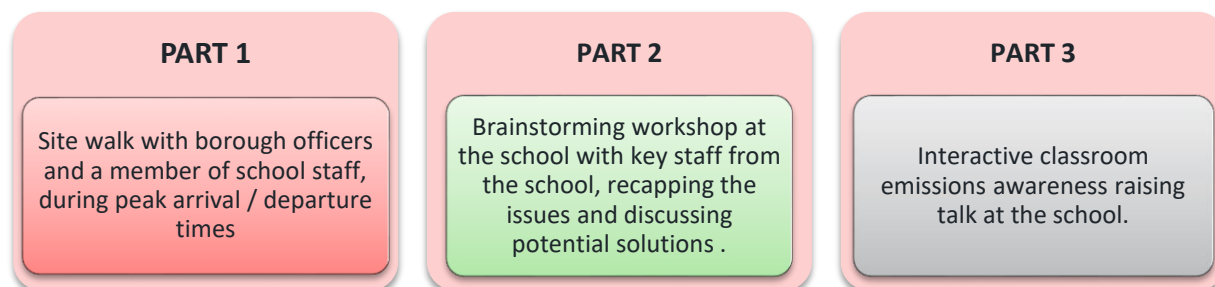
Fieldwork and engagement

2.1.6. The approach taken in carrying out the audit comprised of several elements, including a visit to the school by the WSP auditor and officers at the borough who deal with air quality, transport planning

² STARS is TfL's accreditation scheme for London schools and nurseries, promoting travel to school sustainably, actively, responsibly and safely by championing walking, scooting and cycling.

and school travel. A key element of the audits was to capture the views of school staff, wider school community and relevant borough officers, in understanding operational considerations, behavioural traits and recent history of the school. As such, we proposed a three-fold approach summarised below:

Figure 2 – Key elements of the Audit



- 2.1.7. Initial observations and site familiarisation were undertaken by the auditor prior to the school opening. This allowed us to sense check the context maps compiled initially from desktop assessments. Observations with the borough officers and school staff were then undertaken throughout the period of drop-off and waiting activity, prior to the school gates opening, until parents have dispersed. During this critical period the auditors captured as much information as possible on activity in and around the school, with comprehensive photo records and discussions with the school staff to capture issues which often occur but were not evident during our observations. The external observations were then followed by a walk around the school building and grounds to enable the auditor to familiarise themselves with its layout, and the proximity of classrooms, nurseries, playgrounds etc to areas of poor air quality.
- 2.1.8. A brainstorming session was then undertaken, with key staff from the school and the borough officers in attendance. This session served several functions. It enabled the auditor to capture additional information on other issues and concerns not observed directly, and additional information on issues such as whether there are any plans for extensions or additional pupil intake for example. Whilst from the borough officers we were able to establish what planned or committed development is nearby, proposed or previously considered transport schemes etc. We then discussed a range of potential measures to address the issues discussed and collected feedback and suggestions from the borough and school representatives to inform the recommended measures.
- 2.1.9. An interactive and bespoke engagement activity was then delivered to a school class, using presentation slides to raise awareness of the air pollutions, its causes, the health impact, areas of pollution near the school and a range of measures to reduce air pollution. An audit of the building was then undertaken with the assistance of the facilities manager, including a review of the school's boilers, their flues, the ventilation systems and kitchen extraction.

2.2 AUDIT SCHEDULE - ST STEPHEN' S CHURCH OF ENGLAND PRIMARY SCHOOL

2.2.1. **Table 1** provides further detail of the audit schedule and key participants from the school and borough.

Table 1 - Audit Details

| | | |
|--------------------------------|---|--|
| Date of Audit | Wednesday 18 th October 2017 | |
| School Representatives | Shelagh Coutts (School Business Manager) | |
| Borough Representatives | Carol Lee (Senior Environmental Health Pollution Practitioner - Air Quality), Lindi Louw (School Travel Plan) | |
| Other Attendees | Parents Teacher Association | |
| WSP Auditors | Mark Cottray, George Buxton | |
| Itinerary | Timings | Description |
| | 0800 – 0830hrs | Initial observations and site familiarisation by WSP auditors |
| | 0830 – 0900hrs | Site walk and observations with borough travel plan coordinator / air quality officer and school staff |
| | 0900 – 0930hrs | Internal site walk to appreciate the layout of the building / playgrounds |
| | 1000 – 1130hrs | Brainstorming Workshop |
| | 1130 – 1200hrs | Engagement activity - classroom activity and interactive presentation |
| | 1200 – 1230hrs | School Building Audit |

Recommendations and Reporting

2.2.2. The auditor reviewed the findings of the audit and preparatory assessments, with the specialist support of air quality, transport planning and buildings specialists, to develop advice and recommendations, based on a toolkit of best practice measures and case study examples.

Chapter 3 – Context and Initiatives

3 CONTEXT AND INITIATIVES

3.1 SCHOOL CONTEXT

Borough: Richmond Upon Thames

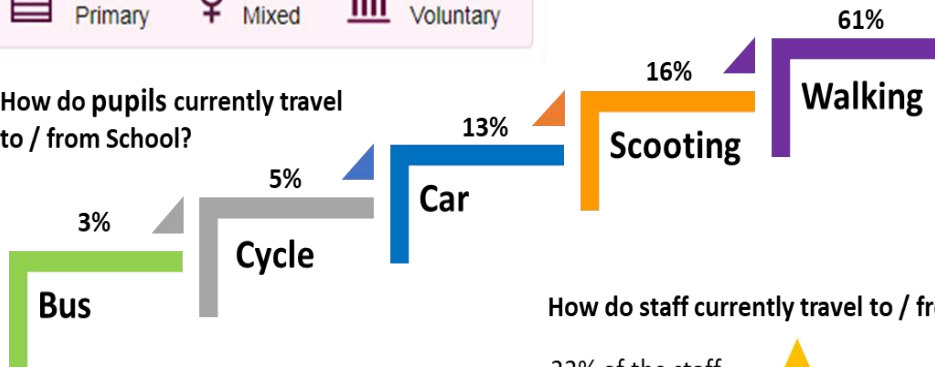
Address: Winchester Road, TW1 1LF

Pupil Numbers: Approximately 400

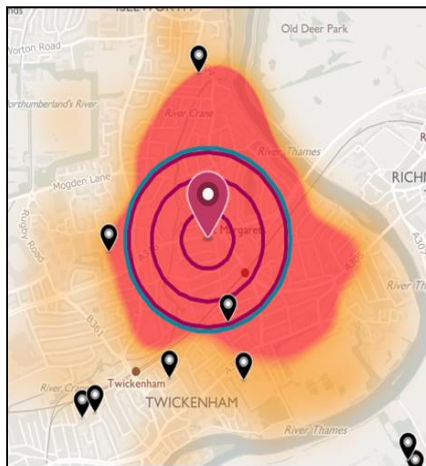
| | | | | | |
|---|-----------------------|---|------------------------|---|--------------------------|
|  | Age Primary |  | Gender Mixed |  | Type Voluntary |
|---|-----------------------|---|------------------------|---|--------------------------|



How do pupils currently travel to / from School?



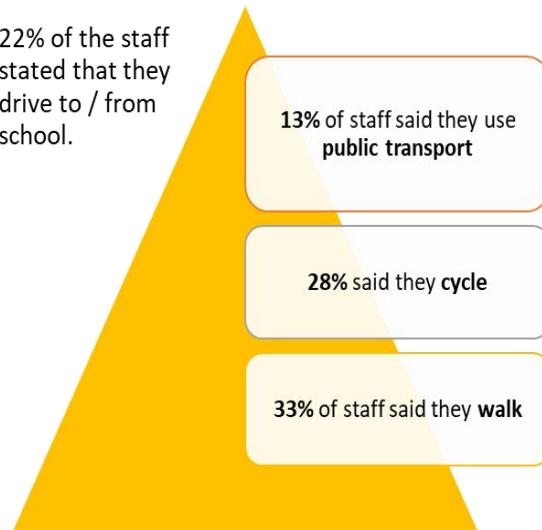
What is the catchment area for the school and how long would it take for pupils to walk to / from the School?



1st Quartile 25% - 0.27km; walking time 3 minutes
 2nd Quartile 50% - 0.58km; walking time 7 minutes
 3rd Quartile 75% - 0.82km; walking time 10 minutes
 Mean - 0.86km; walking time 11 minutes

How do staff currently travel to / from the School?

22% of the staff stated that they drive to / from school.



The map to the left confirms that half of the pupils can travel to / from school within a 7 minute walk, and 75% within a 10 minute walk. The average walking time for pupils is 11 minutes.

- 3.1.1. St Stephens Church of England Primary School is located in south west London and sits within the Royal Borough of Richmond Upon Thames. The school is adjacent to the busy A316 Chertsey Road.
- 3.1.2. Approximately 23,900 vehicles per day travel on the core roads within a 200m radius of the school³. This is within the upper quartile (<75%) in terms of traffic volumes amongst of the 50 schools assessed as part of this programme.
- 3.1.3. The desktop review and subsequent discussions with the school confirmed that over half of pupils currently travel to / from school on foot (61%), 19% travel by other mode, which in this case is scooting, 10% by car and 5% cycle. 4% use public transport to travel to / from school.
- 3.1.4. 33% of school staff travel to work on foot and 28% by cycle, indicating that they live within relatively close proximity of the school. 22% of the staff stated that they drive to / from school.
- 3.1.5. The subsequent two pages illustrates the inner and outer context plans for the school that provides detail on the main access (both pedestrian and vehicular) to the school, the location of the playgrounds where children are most exposed to air pollution, as well as bus routes in the near vicinity of the school and the catchment area for the school.

³ Each site, take a baseline year, take DfTs – look on LAEI for descriptor. Only covers main roads. LAEI modelled roads

Figure 3 - Outer Context Plan

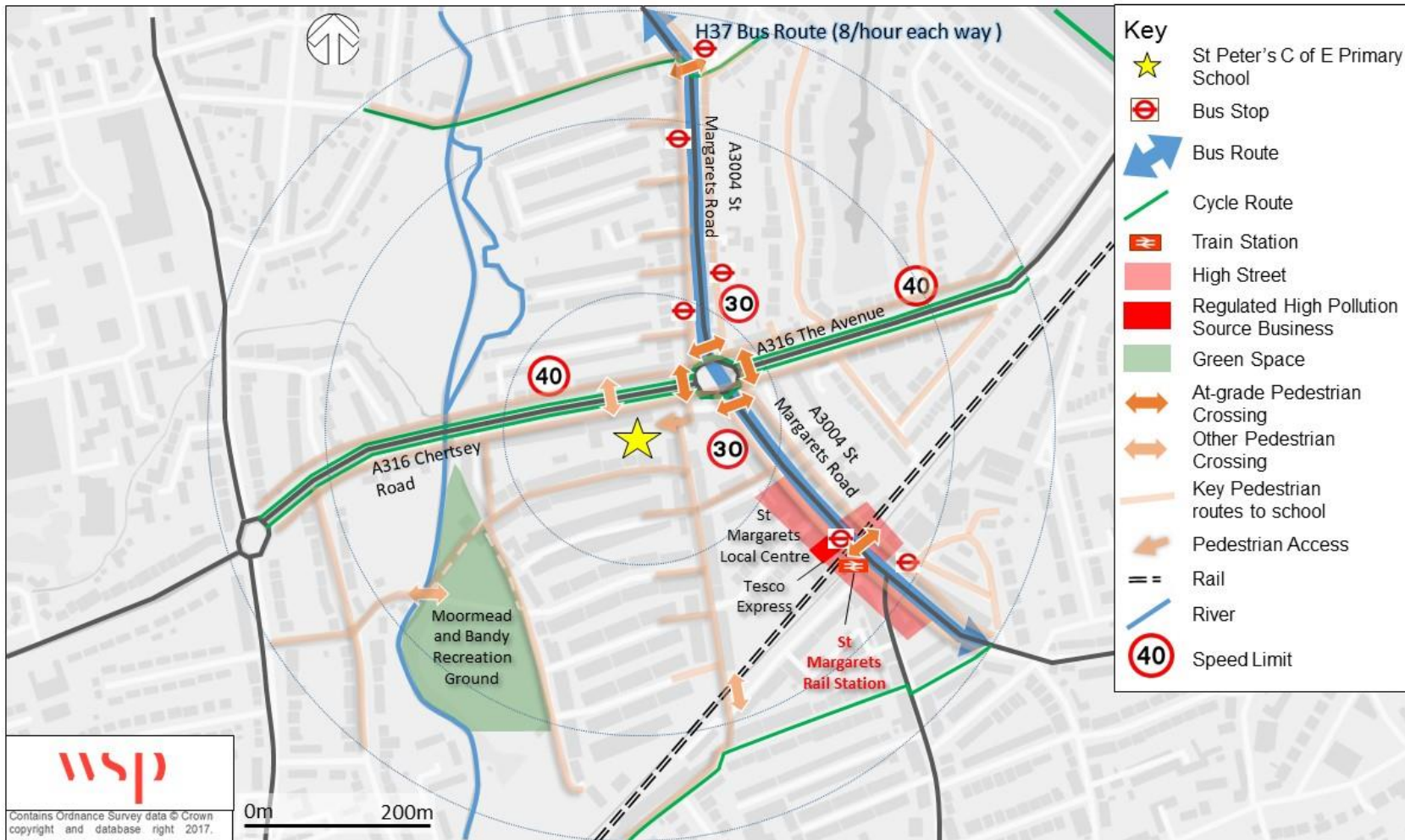


Figure 4 - Inner Context Plans



3.2 PLANNED SCHEMES & RECENT INITIATIVES

3.2.1. Whilst there are no major developments planned within the immediate locality of the school, a number of notable transport schemes were highlighted that will have a significant bearing on the air quality around the school, these include:

WIDER SCHEMES

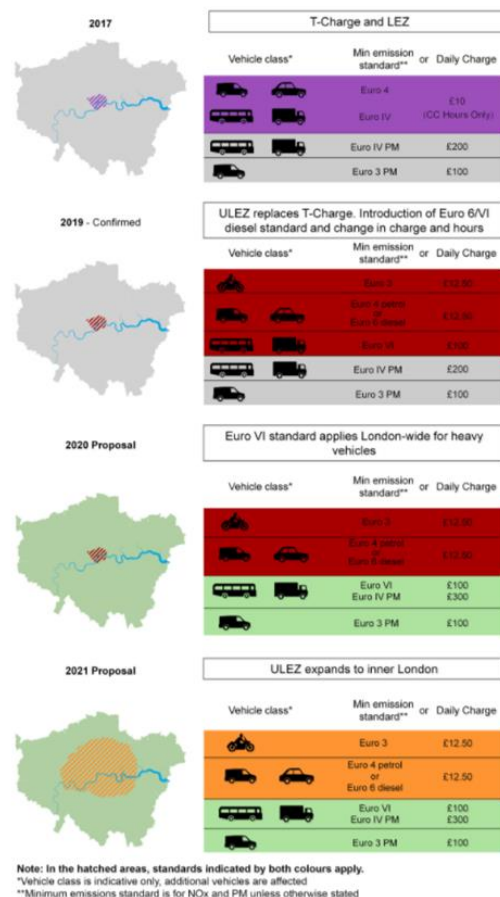
ULTRA LOW EMISSION ZONE (ULEZ) AND LOW EMISSION ZONE (LEZ)

3.2.2. The ULEZ will operate 24 hours a day, 7 days a week within the same area as the current Congestion Charging Zone (CCZ), and comes into force on 8th April 2019. The introduction of the ULEZ will reduce exhaust emissions of NO₂ and particulate matter PM₁₀ and PM_{2.5}. In 2019, all cars, motorcycles, vans, minibuses, buses, coaches and heavy goods vehicles (HGVs) will need to meet exhaust emission standards, or pay a daily charge. In the case of petrol cars and vans this means Euro 4, and Euro 6 for diesels. HGVs and coaches are also Euro 6.

3.2.3. As part of the Mayor's pledge to help improve air quality and health for all Londoners, he is proposing to make the London-wide Low Emission Zone (LEZ) stronger and expand the Ultra Low Emission Zone (ULEZ). This involves introducing a Euro VI emissions standard London-wide for heavy duty vehicles (buses, coaches, Heavy Goods Vehicles (HGVs) and other specialist heavy vehicles) from 26 October 2020 and expanding the ULEZ for light duty vehicles (such as cars, vans and motorcycles) so that all vehicles are subject to emissions standards within an area roughly bounded by the North and South Circular Roads from 25 October 2021.

3.2.4. The introduction and expansion of the ULEZ, and tightening of the LEZ standards, is forecast to result in a 23% reduction in NO_x emissions in the London borough of Richmond upon Thames by 2020, and whilst the school itself is outside the proposed enlarged ULEZ zone, we would anticipate that it will still benefit significantly as all buses and taxis traveling past on route to the zone will be required to meet the tougher new standards

3.2.5. Whilst a number of vehicle may divert their journey in order to avoid paying the daily



ULEZ charges, TfL anticipate that the impact of this will be offset by vehicle owners replacing their vehicles in order to enter the ULEZ area without charge, or opting for a different mode of travel. It is predicted that all boundary areas will see a fall in air pollution as a result of the package of a stronger London wide LEZ standard and an expanded ULEZ.

HEATHROW AIRPORT EXPANSION

- 3.2.6. The proposed expansion at nearby Heathrow Airport was highlighted by officers as a notable development that would further impact on air quality at the school and surrounding areas. Heathrow Airport currently has two runways and operates 480,000 flights per year. The introduction of a third runway will mean that the Airport can accommodate up to 740,000 flights per year⁴.

Whilst the additional flights will result in an increase in pollution, the primary concern at a more local level is the additional vehicle traffic travelling to / from the airport, with almost double the number of flights taking place than at present.

SCHOOL STARS ACTIVITIES

- 3.2.7. STARS (Sustainable Travel: Active, Responsible, Safe), is TfL's accreditation scheme for London schools and nurseries, to inspire young Londoners to travel to school sustainably, actively, responsibly and safely by championing walking, scooting and cycling.
- 3.2.8. As part of the STARS scheme schools receive bespoke guidance from the borough, high quality on-line resources with over 120 activity cards, access to a London-wide community of schools, priority access to funding, accreditation and recognition.
- 3.2.9. St Stephen's CofE Primary School holds Gold status of the STARS programme as of September 2017, and has been active in undertaking a range of STARS activities, with the following recorded since 2015:



- Travel Activity: Pool bikes and scooters scheme, public transport for school trips, private coaches for school trip, junior travel ambassador scheme, walking activities, bikeability training, pedestrian skills training, cycle parking installed, other travel competitions, scooter training, walk to school week, walking bus, bike security marking event, independent travel training.
- Supporting Activity: Local authority funding, TfL funding, other curriculum activity, attend a TfL borough or school travel event, other partnership activity, working in partnership with local police, communicating with parents/carers, senior management and school governor involvement, school travel working group, audits and research, mapping exercise, pupil involvement, air quality competition, school active travel policy, other sources of funds for travel activities, pupil journey planning.

⁴ https://www.gov.uk/government/uploads/system/uploads/attachment_data/file/654320/aos-revised-draft-airports-nps-non-technical-summary.pdf

HEALTHY SCHOOLS LONDON ACCREDITATION

- 3.2.10. Healthy Schools London is a programme that supports London's schools to provide an environment and culture that helps their pupils grow to be healthy happy and learn. This programme supports schools as they work towards an award scheme (sponsored by the Mayor of London), with a network of local coordinators, and a range of resources, tools and advice provided through this website and regular workshops for schools.
- 3.2.11. It is available to all schools in all of London's boroughs and St Stephens CofE is registered.



**HEALTHY SCHOOLS
LONDON**

Chapter 4 – Audit Findings: Sources of Emissions and Exposure

4 AUDIT FINDINGS: SOURCES OF EMISSIONS & EXPOSURE

4.1 INTRODUCTION

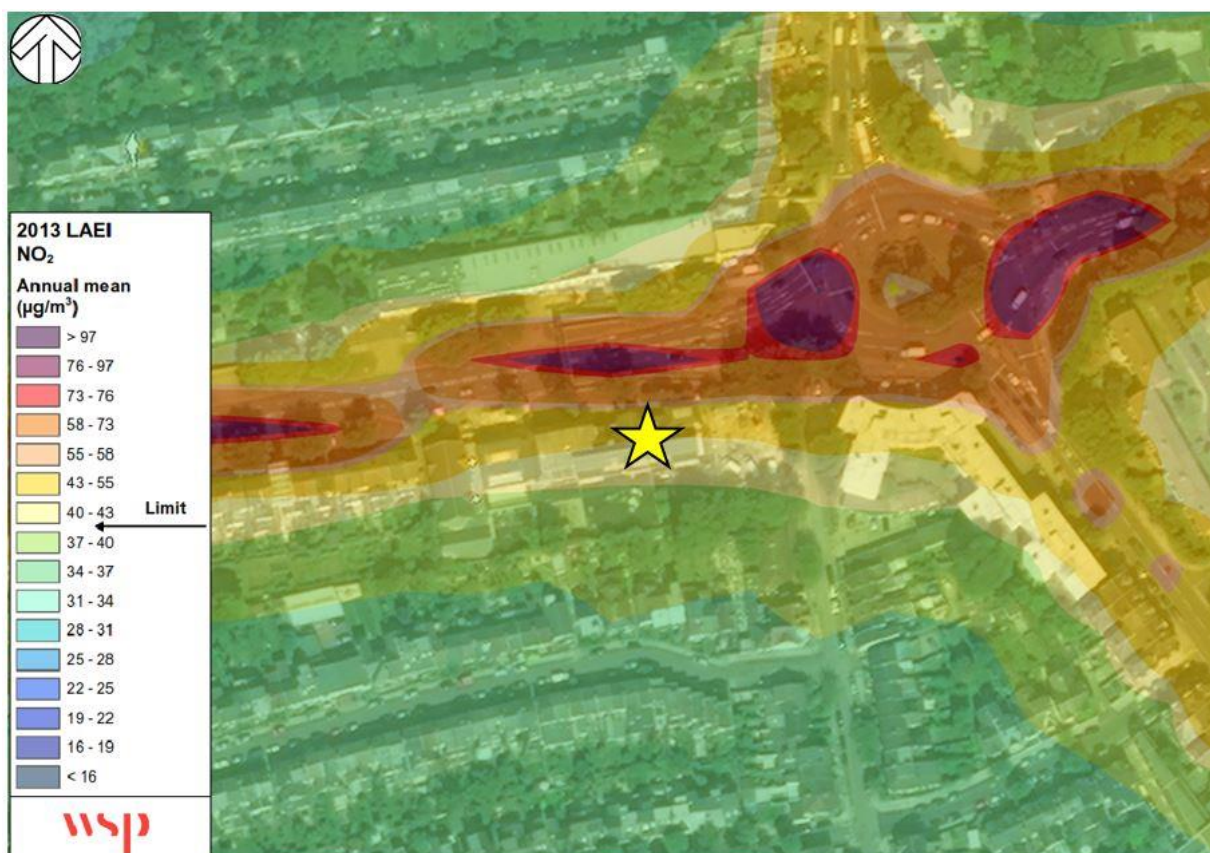
4.1.1. The audit findings are summarised in this chapter as follows:

- Air quality data
- Observed issues, emission sources or exposure:
 - Highways
 - School grounds and buildings

4.2 AIR QUALITY IN THE SURROUNDING AREA

4.2.1. The air quality data used to assess the pollution climate immediately around each school has used a combination of modelled and measured data. Modelled baseline NO₂ annual mean concentrations have been taken from the 2013 London Atmospheric Emissions Inventory (LAEI) model. NO₂ measurements have been derived for the past ten years (2006-16) for the closest monitoring site to the school from a combination of measurements taken from the London Air Quality Network (LAQN) and Local Authority diffusion tube sites, where available.

Figure 5 - Localised Air Quality modelling around St Stephens CofE Primary School

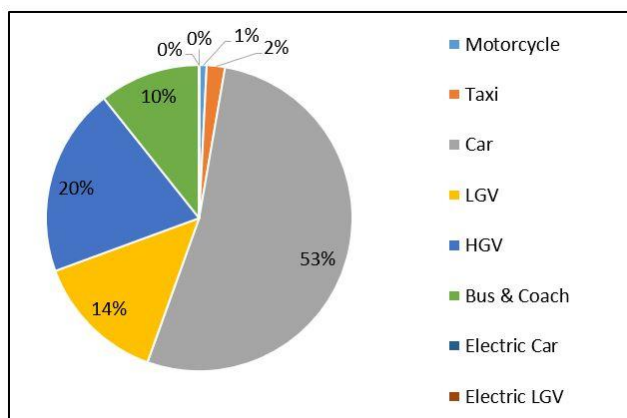


4.2.2. Briefly, the LAEI model provides mapped annual mean NO_x, NO₂, PM₁₀ and PM_{2.5} concentrations on a 20m x 20m basis for the whole of London from a base-year of 2013 for 2020, 2025 and 2030. The LAEI uses air pollution emission estimates from a wide range of sources including transport, industrial, domestic and commercial combustion, agriculture and long-range transport using the most up-to-date activity data, emission factors and projection factors. Figure 5 shows the 2013 LAEI baseline annual mean NO₂ concentrations within the vicinity of St Stephens CofE Primary School in Richmond. The contours (changes in colours) show how the pollution gradient changes, with distance, away from the heavily trafficked A316 Chertsey Road. NO₂ concentrations are predicted to be higher along the northern boundary of the school, which is closest to the main road.

4.2.3. Nearly 50% of NO_x emissions in London are from road transport. Vehicle emissions data for the LAEI modelled road links within 200m of the school, split by source, have been analysed to identify the key sources contributing to NO₂ in the vicinity of the school. The pie chart below shows that HGVs account for 3% of the total traffic but contribute 20% of the transport related NO_x emissions locally. Coaches and Buses also contribute to 10% of transport emissions, despite accounting for just 1% of the total traffic in nearby roads.

Figure 6 - Road Transport NO_x Emissions and Volumes

Road Transport Emissions – Split by Source Sector



Road Transport Emissions – Split by Vehicle Type

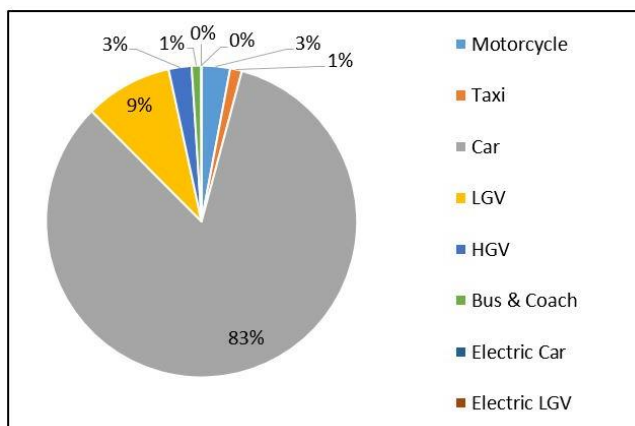
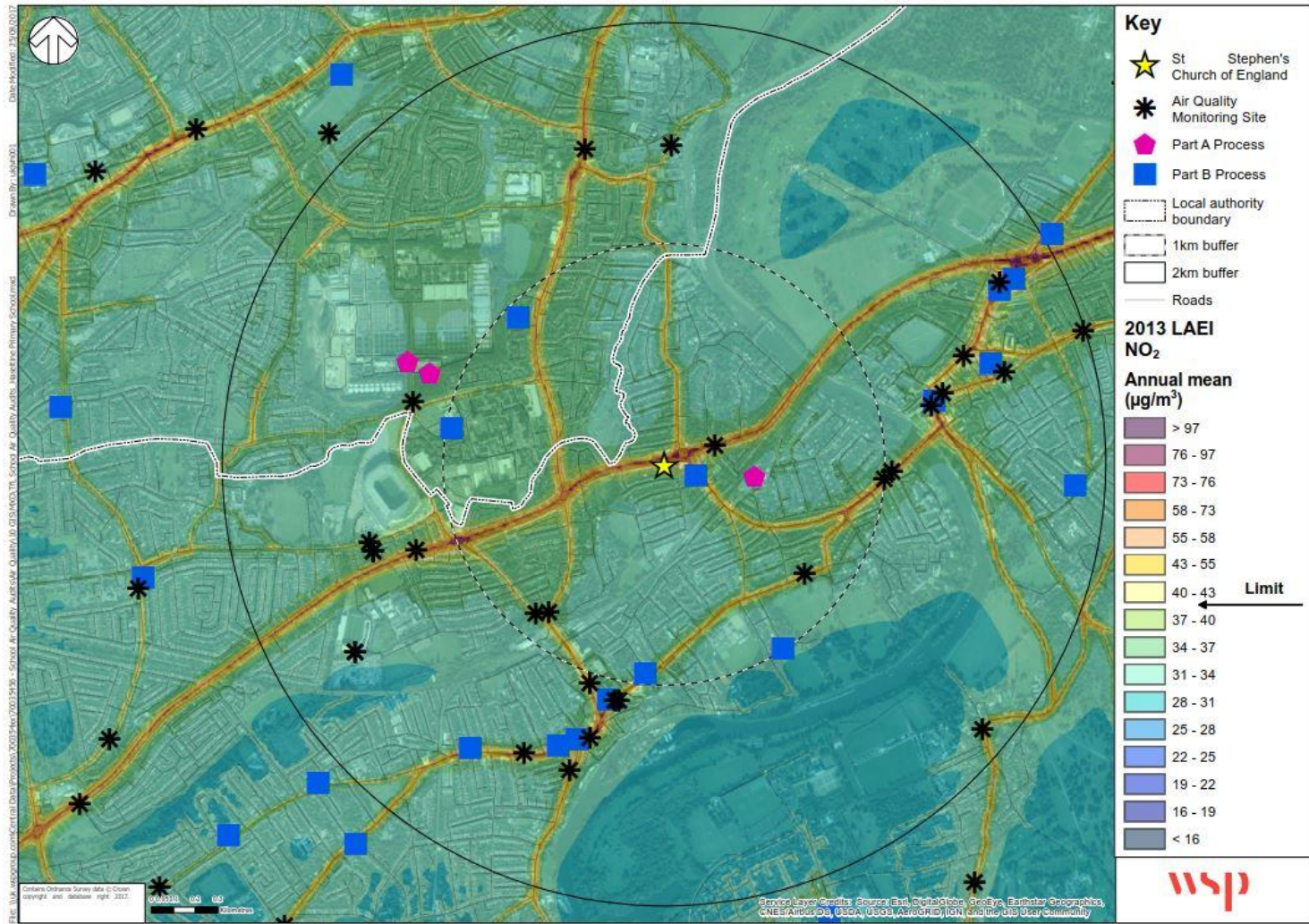


Figure 7 - Air Pollution in the surrounding areas



Note: Part A and B Processes include regulated industrial installations that have the potential to cause pollution and are required to have an Environmental Permit to operate, including facilities which carry out industrial processes, waste activities, mobile plant and solvent emission activities.

4.3 HIGHWAYS - KEY OBSERVATIONS

- 4.3.1. Most children have to cross the busy A316 Chertsey Road to the north of the school. The A316 forms part of the Transport for London Road Network (TLRN) with large numbers of HGVs and coaches.
- 4.3.2. The main access into the school is via Winchester Road to the south of the A316. There is no direct vehicle access between the A316 and Winchester Road, though there is a route through for pedestrians and cyclists.
- 4.3.3. Winchester Road is part of a Controlled Parking Zone (CPZ), meaning you must be a resident permit holder to park on-street Monday to Friday between the hours of 1000 – 1630hrs. There is no parking or waiting permitted on the A316, albeit there are some parking bays adjacent to the carriageway (see image).
- 4.3.4. It was observed on site that parents / guardians frequently use Winchester Road and St Margarets Grove and unused parking spaces adjacent to the A316 to drop-off / pick-up pupils at the school.
- 4.3.5. Winchester Road in particular becomes heavily congested, with some parents observed parking on the adjacent private road leading to residential garages.
- 4.3.6. It is however recognised that the travel to school by car activity is only a small contributor to overall poor air quality around the school, and that the majority of air pollution in this location will be associated with wider background emissions
- 4.3.7. The road is a cul-de-sac with a very constrained turning space at the northern end, which is heavily used by parents performing a U-turns having dropped of their children, and results in vehicles reversing amongst children accessing the school from the north.
- 4.3.8. Some parking was observed on the school keep clears, and the school staff advise this often happens more frequently. The parents dropping off children by car were observed idling when parked on Winchester Road and the parking spaces on the A316.
- 4.3.9. It was noted from discussions that following the closure of the footbridge used by pupils travelling to / from north of the School, they were now spending a lot longer trying to cross the A316 and so exposed to greater levels of pollution.
- 4.3.10. The school advised that there appeared to be fewer drop-off activities on the day of the audit, which they felt may be due to advanced notice of the audit being provided in the newsletter, so feel; the extent of pick up drop off activity and idling observed may not have been representative of the true extent of the problem.

Summary – Key Issues

- Heavily trafficked road with large numbers of HGVs, some chaotic parking and school drop off activity, with unsafe turning in the road, and potentially discouraging greater travel to school by walking, engine idling around the school gate.



Northbound Parking



View northbound



A316 - Westbound



Residential Parking Opposite school entrance



A316 - Eastbound



School Access workshop at the

4.4 SCHOOL GROUNDS / BUILDING - KEY OBSERVATIONS

- 4.4.1. The school site is accessed from the southeast corner, where the children enter via the main playground accessed via Winchester Road. The entrance from Chertsey Road is not used by pupils, and is restricted in use by staff and visitors (typically outside of peak drop-off / pick-up hours).
- 4.4.2. The main school building is thought to be of 1900s construction and is split over two floors. The western part of the building is a relatively new build. The playground is set south of the main buildings which acts as a barrier to the air pollution from the A316.
- 4.4.3. All of the classrooms are south facing, away from the busy A316 where air pollution is at its worst. The main entrance for visitors / staff and reception is situated on the southern side
- 4.4.4. For the most part the playground is screened from the busy A316 by the main building. The exception to this is the north eastern part of the playground, which is used in break times and P.E lessons.
- 4.4.5. The school has secured some funding for a section of green wall to be installed on the boundary with Winchester Road, and has aspirations to extend this across the entire perimeter of the school grounds.
- 4.4.6. The school is reliant on natural ventilation via windows and doors and it is reported that windows will be opened, in the summer months for classrooms.
- 4.4.7. The older part of the building is likely to be less efficient than the newer build, meaning that it results in greater heat loss, and so has potentially increased run times by school boilers and therefore greater emissions. It also results in higher temperatures during warmer weather, requiring windows/doors to be opened and so greater exposure.
- 4.4.8. The typical cavity wall method of construction became widespread from the 1920s and therefore the older building is likely to have solid walls that will not retain heat as efficiently as cavity walls, used in the western part of the building.
- 4.4.9. Council officers who attended the audit undertook a variety of monitoring tests, both in and around the school. The results provide a **snapshot** of one month and gives an indication of levels only. Attempts to turn this into an annual average were considered not advisable, therefore the results are not comparable with annual averages around the borough but do provide an insight into the variation of air pollution levels around the school grounds / entrance. The results confirmed:

- Relatively low levels of NO₂ recorded within classrooms (with windows closed).
- Moderate levels of NO₂ and PM_{2.5} / PM₁₀ within school playgrounds.
- Very high levels of NO₂ and PM_{2.5} / PM₁₀ on the central reservation used to cross the A316 Chertsey Road.

- 4.4.10. Cycle / scooter parking for staff / pupils is available at the northern part of the site adjacent to the A316, and was observed to be well used. The number of adult bicycles parked on site substantiates the staff survey findings presented in Chapter 3, whereby over one fifth of staff members travel to / from school by cycle.

- 4.4.11. The boilers (4) are located over two plant rooms, all of which are relatively new (3-5 years old) and appeared in good condition. The flue exits via a reasonable height and away from spaces used by the children.
- 4.4.12. There is no staff parking on site.

Summary – Key Issues

- Limited screening around the perimeter of the school grounds, reliant on natural ventilation, with poor insulation potentially worsening the need for ventilation in hot weather, and requiring longer run times of school boilers, a further source of local emissions.



A316 Staff / Visitor



Scooter Parking Provision



Main Playground



Green Wall (Winchester Rd)



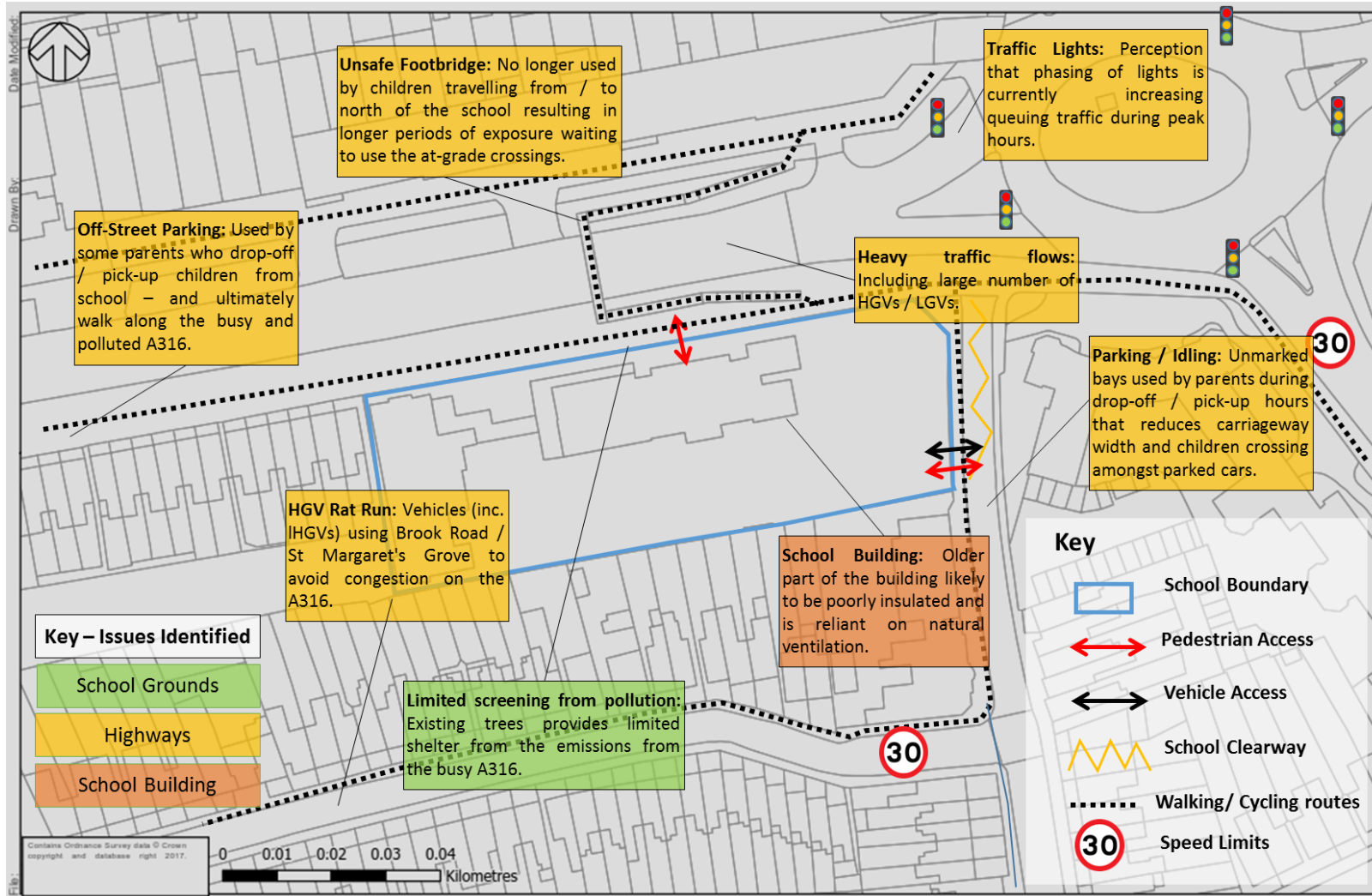
Classroom (South facing)



Staff Cycle Parking

4.5 KEY OBSERVATIONS - SUMMARY OF ISSUES

Figure 8 - Summary Issues Map



Chapter 5 – Recommendations

5 RECOMMENDATIONS

5.1 DEVELOPING THE RECOMMENDATIONS

- 5.1.1. Based on the preceding desktop research, site audits and stakeholder feedback, a range of recommended measures and initiatives have been identified to deliver air quality improvements and reduced exposure to air pollution. The recommendations will not in themselves solve the air quality problem, but will each contribute directly or indirectly to helping improve the situation in and around the schools.
- 5.1.2. These recommendations are drawn from a comprehensive School Air Quality Audit Toolkit of Measures, researched and developed as part of the Mayor's Air Quality Audits project (see Appendix D for further details). The toolkit has been compiled from a review of best practice approaches and new technologies, including both well established and simple measures, and more innovative or harder hitting measures. The measures include both physical measures and softer behavioural measures.
- 5.1.3. The characteristics of the local area, school site and school building have then been accounted for in identifying and tailoring a suitable package of measures to address the issues identified in causing sources of pollution or exposure to air pollution. These recommendations have also sought to be cognisant of any relevant existing plans for the local and wider area around the school (see Section 3.2).
- 5.1.4. A key facet of this approach, and the palette of measures from which measures were identified, is that they represent a holistic approach, as promoted by the Healthy Streets approach, in seeking to address a broad range of factors which each influence how streets are used, how people travel and consequently how clean the air is in and around the school. As such whilst a number of measures are less directly related to air quality, they were felt to offer the potential for contribute indirectly, for example through creating a better and safer environment for travelling by sustainable modes.
- 5.1.5. **Table 2** on the following page sets out the list of recommendations. For the purposes of this assessment they have been categorised as proposals associated with either Highways, school grounds or school building. In order to enable comparison of each measure, and to assist the school, borough and other stakeholders, in determining which measures to prioritise, each has been assessed against a series of key criteria:

- **Potential Air Quality Improvement**

- Low – nominal measureable change but a tangible reduction in sources or exposure
- Medium – a small measurable change in air quality
- High – a large measureable improvement in air quality

- **Wider Benefits**

- Such as improved safety, visual amenity, child health and welfare, improve learning environments, cost savings, promotion of sustainable transport, contributes to STARS or Healthy School London

- **Cost** (*Note these reflect the overall costs, but these may vary amongst different stakeholders*)

- Low - <£10k
- Medium - £10k - £100k

- High - >£100k

■ **Deliverability**

- Quick Win – readily deliverable within 12 months
- Medium term – deliverable within 1-3 years
- Longer term – only deliverable in the longer term (i.e. over 3 years)

■ **Stakeholder Support**

- Low – likely to be significant objections which could delay/prevent the scheme
- Medium – may be some objections and will require consultation but not significant delays
- High – likely to have strong support from key stakeholders

5.1.6. These are high level comparative analyses intended to offer a means of considering the recommendations against one another in relative terms. Further more detailed research and options development would be required to quantify these recommendations in greater detail, such as would be undertaken in a subsequent feasibility study. The implementation of the measures will be dependent on securing funding to enable delivery over time (see section 5.8), as well as undertaking feasibility assessments and scheme prioritisation

Table 2 – Recommended measures for considerations

| Measure | Description | Purpose | Potential Air Quality Improvement | | | Wider Benefits | Cost | | | Deliverability | | | Stakeholder Support | | | |
|---|--|--|--|--------|------|----------------|---|--------|------|----------------|-------------|-----------|---------------------|--------|------|---|
| | | | Low | Medium | High | | Low | Medium | High | Quick Win | Medium Term | Long Term | Low | Medium | High | |
| Highway (Key Stakeholder: Borough) | | | | | | | | | | | | | | | | |
| 1 | Anti-Idling | Raise awareness to minimise idling activity on Winchester Road and the busy A316 through signage on the footbridge and around the school perimeter, with banners to raise awareness at the launch. This would require liaison with TfL. This could be progressed via a recruitment of a 'Vehicle Idling Action Champion' for Richmond which the Council has signed up to. | Reduce sources and exposure | X | | | <ul style="list-style-type: none"> Supports STARS and HSL objectives | X | | | X | | | | | X |
| 2 | 'School-Street' | Trial 'School Street' on Winchester Rd to significantly reduce traffic flow during peak hours associated with the school. This would be enforced by CCTV and is being trialled by a number of other Local Authorities, including Hammersmith & Fulham. Ultimately, the camera could be deployed at other sites or used to enforce other traffic contraventions (i.e. illegal use of bus lanes) to help the business case in progressing. | Reduce sources and exposure | X | | | <ul style="list-style-type: none"> Road safety | | X | | X | | | | X | |
| 3 | Improve turning space to lessen pedestrian conflicts | If a school street is not implemented, consider options for providing a less constrained turning space at the northern end of Winchester Road to better manage potential conflicts with passing children, This may necessitate the loss of two parking bays and require an on-street parking survey to understand existing parking stress levels. | Promoting walking, scooting and cycling by providing improved local conditions | X | | | <ul style="list-style-type: none"> Road safety Child health and welfare Promotion of sustainable transport | X | | | X | | | | X | |
| 4 | Weight Restrictions | Brook Road and Margarets Grove is currently used as a rat run by HGVs to avoid congested A316. Investigate implementation of weight restrictions – study would need to be undertaken to understand current usage. | Reduce sources and exposure | X | | | | X | | | X | | | | X | |
| 5 | Promote cleaner routes to school | Encourage children approaching the school avoiding the A316 and using the side roads instead. In conjunction with awareness raising. The promotion of walkit.com and GLA cleaner route finder could assist with this. | Reduce exposure | X | | | | X | | | X | | | | X | X |

| Measure | Description | Purpose | Potential Air Quality Improvement | | | Wider Benefits | Cost | | | Deliverability | | | Stakeholder Support | | |
|---------|---|--|-----------------------------------|--------|------|---|------|--------|------|----------------|-------------|-----------|---------------------|--------|------|
| | | | Low | Medium | High | | Low | Medium | High | Quick Win | Medium Term | Long Term | Low | Medium | High |
| 6 | Healthy Streets approach, sustainable transport and roadspace reallocation from vehicular traffic | Promote the Mayor of London's Healthy Streets approach which aims to improve air quality, reduce congestion and help make London's diverse neighbourhoods greener, healthier and more attractive places to live, work, play and do business. Take a proactive role in endorsing the approach and supporting these initiatives. | | | X | <ul style="list-style-type: none"> Promotion of sustainable travel | | | X | | | X | | X | |
| 7 | Additional parking charges for more polluting vehicles | Consider introducing surcharges on top of existing parking charges for more polluting vehicles. A trial in Westminster found that the number of dirtier diesel vehicles using the parking bays dropped by 12%. Westminster's, and Islington also looking to introduce a similar scheme. | | | X | | | X | | | X | | X | | |
| 8 | Non-Road Motorised Mobile Audit | The Council could consider a requirement for a Non-Road Motorised Machinery (NRMM) Audit to be undertaken at construction sites. This requirement is being trialled within some Low Emission Neighbourhoods to help ensure compliance of vehicles used for developments. Currently, NRMM is the third largest contributor of NOx emissions and the fifth largest contributor of PM emissions in London, and any comprehensive plan to reduce London's emissions should attempt to address emissions from construction machinery. | X | | | <ul style="list-style-type: none"> Reduce noise | X | | | X | | | | X | |
| 9 | Control of Dust and Emissions during Construction and Demolition SPG | Introduce a requirement in planning conditions to manage dust and emissions associated with construction based on the Control of Dust and Emissions during Construction and Demolition SPG prepared by the GLA, which includes requirements for construction sites to monitor air quality and share the results with the borough council – https://www.london.gov.uk/what-we-do/planning/implementing-london-plan/supplementary-planning-guidance/control-dust-and | X | | | | X | | | X | | | | X | |

Highway (Key Stakeholder: TfL)

| Measure | Description | Purpose | Potential Air Quality Improvement | | | Wider Benefits | Cost | | | Deliverability | | | Stakeholder Support | | | |
|---|--|--|--|--------|------|----------------|---|--------|------|----------------|-------------|-----------|---------------------|--------|------|---|
| | | | Low | Medium | High | | Low | Medium | High | Quick Win | Medium Term | Long Term | Low | Medium | High | |
| 10 | Ultra-Low Emission Zone | The introduction of the ULEZ in central London in April 2019 and the proposed expansion of the ULEZ up to the North/South circular for all vehicles and the tightened emission standards for the Low Emission Zone for buses, coaches and lorries across the whole of London (subject to consultation) will significantly improve air quality. | | | X | | | | X | | | X | | X | | |
| 11 | Improved crossing facilities on desire lines | Investigate scope to reduce crossing time on the A316 time for pedestrians, where children are most exposed to poor air quality. Any changes to signal timings is likely to be reviewed against the subsequent impacts on the flow of traffic. Worsening congestion could have the opposite desired impact. | Promoting walking, scooting and cycling by providing improved local conditions | X | | | <ul style="list-style-type: none"> Road safety | X | | | | X | | X | | |
| School Grounds (Key Stakeholder: School/ Borough) | | | | | | | | | | | | | | | | |
| 12 | Green Infrastructure | Install additional green screening/climbers around the exposed playground. A dense vegetation layer with a high leaf density can catch some pollutant and particulates and hang on to them until they can be washed away by rainfall. | Reduce exposure to emissions | X | | | <ul style="list-style-type: none"> Visual amenity Security, privacy | | X | | | X | | | X | |
| 13 | Scooter/ Cycle Parking | Increase scooter and cycle parking spaces to encourage sustainable / healthy travel behaviour, particularly near the main entrance. | Promoting walking, scooting and cycling by providing improved local conditions | X | | | <ul style="list-style-type: none"> Promotion of sustainable transport Supports STARS objectives | X | | | X | | | | | X |
| School Building (Key Stakeholder: School/ Borough) | | | | | | | | | | | | | | | | |
| 14 | Ventilation systems with air filtration | Consider investing in air filtration systems in classrooms most exposed to poor air quality and reliant on natural ventilation, fronting the busy A316. The systems use multiple filters, including activated carbon, titanium dioxide UV systems, and nano pore systems, blasting polluted air with UV and inlets should be positioned away from main sources of emissions, such as boilers and areas of poor | Reduce exposure to emissions | X | | | <ul style="list-style-type: none"> Improved learning environments | | X | | | X | | | X | |

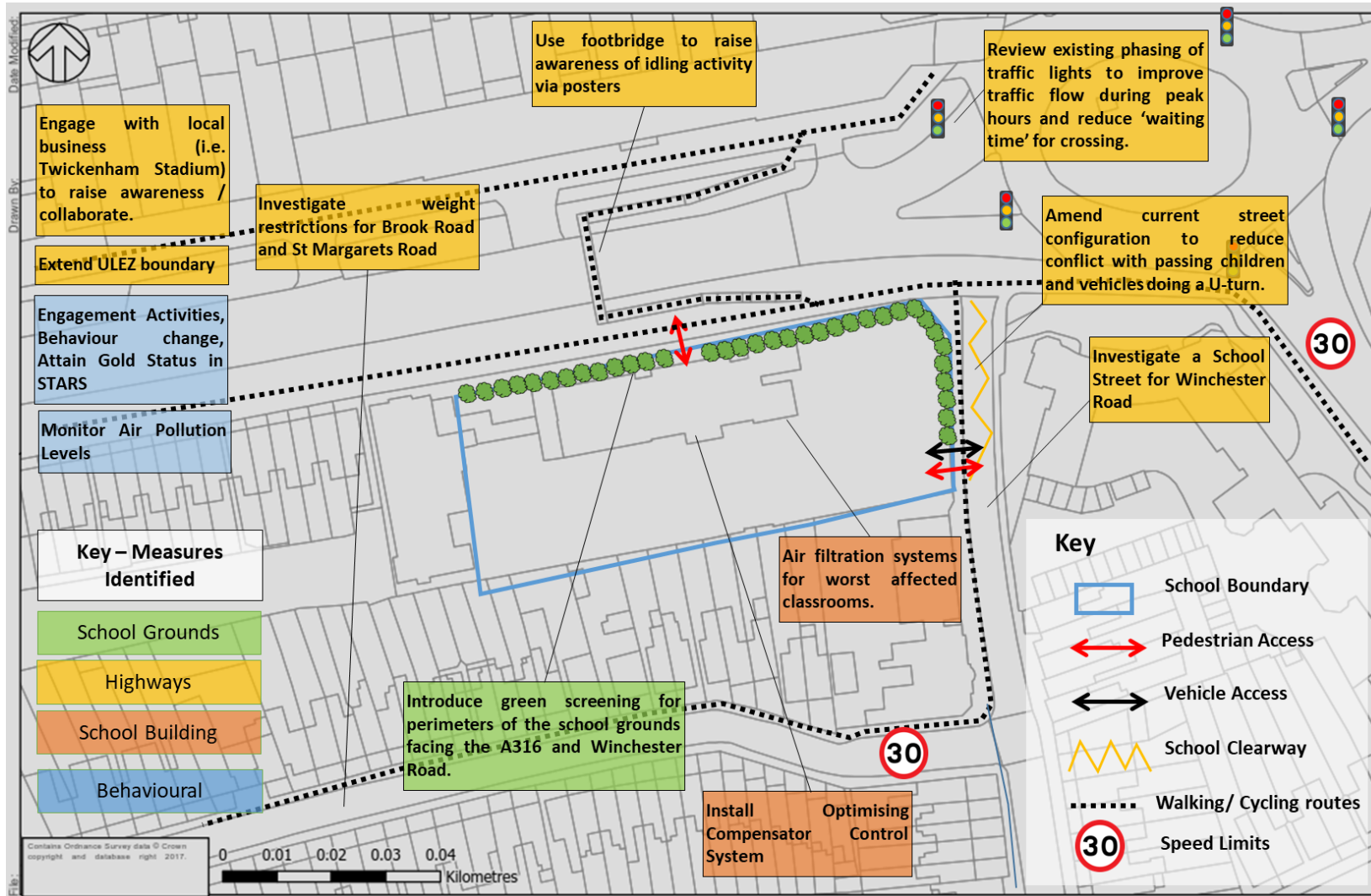
| Measure | Description | Purpose | Potential Air Quality Improvement | | | Wider Benefits | Cost | | | Deliverability | | | Stakeholder Support | | | |
|--|---------------------------------------|---|--|--------|------|----------------|---|--------|------|----------------|-------------|-----------|---------------------|--------|------|---|
| | | | Low | Medium | High | | Low | Medium | High | Quick Win | Medium Term | Long Term | Low | Medium | High | |
| | | air quality. These systems are relatively high cost, only cover a single room per unit, and do require ongoing maintenance and power consumption, but have demonstrated some encouraging initial scientific evidence of efficacy, with titanium dioxide proven to act as a reducer for NOx and NO2, and some claims it will eliminate 99.5% of NO2 and convert this to nitrates. They can also assist with virus elimination/reduction. They can also include HEPA filters which will filter out some PM. The technology is widely used in in South Korea, in universities and hospitals, mainly for virus reduction. | | | | | | | | | | | | | | |
| 15 | Optimising Compensator Control System | Installation of an Optimising Compensator Control System to reduce time the boiler is used based on e.g. weather, occupancy of school etc. This should reduce the site gas usage due to more efficient control of the heating system, reducing local emissions from gas combustion. | Reducing sources and exposure | X | | | <ul style="list-style-type: none"> Reduced energy consumption and reduced operating costs | X | | | X | | | | | X |
| Behavioural Measures (Key Stakeholder: School/ Borough) | | | | | | | | | | | | | | | | |
| 16 | Staff Engagement | Awareness raising session amongst staff about the impacts / costs of heating classrooms and share best practice. | Reducing sources and exposure | X | | | | X | | | X | | | | | X |
| 17 | Restrict staff deliveries | Deliveries made to people's workplace accounts for a significant percentage of total volume of traffic in London and therefore emissions. Restricting staff related deliveries to the school and promoting the use of 'Click & Collect' can contribute towards enhancing air quality. | Reduce sources of emissions | X | | | | X | | | X | | | | X | |
| 18 | Engagement Activities | Deliver lesson plans with bespoke materials, poster and London school curriculum (see Appendix C), raising awareness of the issues and the type of measures that can have a positive impact on reducing poor air quality | Awareness raising and behavioural measures | X | | | <ul style="list-style-type: none"> Awareness raising Secure community buy-in for measures | X | | | X | | | | | X |
| 19 | Behaviour change | Prepare 'Welcome Packs' for new pupils / parents that includes the promotion of apps / sites such as 'www.walkit.com' to a) promote walking to / from school and b) promote the | Behavioural measures / reducing | X | | | <ul style="list-style-type: none"> Awareness raising | X | | | X | | | | X | |

| Measure | Description | Purpose | Potential Air Quality Improvement | | | Wider Benefits | Cost | | | Deliverability | | | Stakeholder Support | | | |
|--|--|--|-----------------------------------|--------|------|---|------|--------|------|----------------|-------------|-----------|---------------------|--------|------|--|
| | | | Low | Medium | High | | Low | Medium | High | Quick Win | Medium Term | Long Term | Low | Medium | High | |
| | | suitable walking routes to avoid air pollution hotspots. | | | | <ul style="list-style-type: none"> Secure community buy-in for measures | | | | | | | | | | |
| 20 | Monitor London Air website / app | Daily monitoring of London Air website / app to understand air quality on the day and whether e.g. opening of windows, will increase exposure of air pollution to staff and students. This could include a member of staff signing up for airtext alerts or other pollution forecasting alerting systems. | X | | | <ul style="list-style-type: none"> Awareness raising Reduced energy consumption and reduced operating costs Child health and welfare | X | | | X | | | | | X | |
| 21 | Maintain Gold status in STARS | Maintain gold status, which would entail achieving a range of measures promoting active travel and reduced emissions, also signposting additional initiatives and avenues of support. The framework also helps document and track progress, and implement recommendations. | X | | | <ul style="list-style-type: none"> Awareness raising Supports STARS | X | | | X | X | | | | X | |
| 22 | Attain a Bronze Award in Healthy Schools | This will entail reviewing its practice in promoting health & wellbeing that must be evidenced (via a Review Tool) and then strive for a Silver and ultimately Gold Award. | X | | | <ul style="list-style-type: none"> Awareness raising Supports STARS and HSL objectives | X | | | X | | | | | X | |
| Wider Measures (Key Stakeholder: Borough/ TfL/ GLA/ Central Government) | | | | | | | | | | | | | | | | |
| 23 | Targeted scrappage scheme for polluting vehicles entering London | Engage with any future proposals or consultations regarding the introduction of a targeted scrappage scheme, aimed at more polluting vehicles recorded entering London regularly over an extended period, promoting a transition to ultra-low emission vehicles, in conjunction with measures to promote more sustainable transport. | | | X | | | | X | | | | X | X | | |
| 24 | Reform Vehicle Excise Duty | Lobby national government to reform Vehicle Excise Duty to reflect emissions of local pollutants as well as CO ₂ , and remove the ongoing incentivisation this lends to diesel vehicles. | | | X | | | X | | | | | X | X | | |
| 25 | Promote a transition to electric | Seek to promote the principles of 'an all-electric city', including reducing/eliminating the use of gas in buildings, which city wide | | | X | | | X | | | | | X | X | | |

| Measure | Description | Purpose | Potential Air Quality Improvement | | | Wider Benefits | Cost | | | Deliverability | | | Stakeholder Support | | | |
|---------|--|---|-----------------------------------|--------|------|----------------|------|--------|------|----------------|-------------|-----------|---------------------|--------|------|--|
| | | | Low | Medium | High | | Low | Medium | High | Quick Win | Medium Term | Long Term | Low | Medium | High | |
| | heating and heat pumps | account for over 33% of emissions, by requiring or incentivising the use of electric heating/cooling via heat pumps in new buildings and major redevelopments. | | | | | | | | | | | | | | |
| 26 | Reform Buildings Regulations to promote heat pumps | Support and promote dialogue at a national level concerning buildings regulations and how they're calculated to better account for local air quality issues as well as energy efficiency, and so promote wider deployment of technologies such as heat pumps. | | X | | | | X | | | | | X | X | | |
| 27 | Zero emission zones | Review the effectiveness of planned measures and develop an approach for introducing a zero emission zone in central London and town centres in the short to medium term, and larger inner London and London-wide zones in the longer term. To be developed in conjunction with other policies such as the creation of Liveable Neighbourhoods, reducing road danger and making more efficient use of the street network, including for freight and servicing. Any specific schemes would be subject to statutory consultation. | | | X | | | | X | | | | X | X | | |

5.2 KEY RECOMMENDATIONS - SUMMARY OF MEASURES

Figure 9 - Summary Recommendations Map



5.3 PRIORITISED MEASURES FOR THE SCHOOL

5.3.1. To help prioritise what measures should be progressed for the school, borough officers and representatives of the school were asked:

'Based on the toolkit of measures and the findings of the observations and initial analysis, what are the top three measures you would prioritise for the school?'

5.3.2. The three measures identified as a priority were (in no particular order):

- School Street
- Green Infrastructure
- Reinstating of the footbridge over the A316.

5.3.3. The latter is linked to the implementation of a toucan crossing installed on the western arm of the A316 St. Margaret's Roundabout in 2015, outside the primary school. This included the temporary closure of the footbridge because it was reaching the end of its usable life and consultation was undertaken to examine the option of permanently removing the footbridge. At the time of the audit the footbridge was not open for use by pedestrians and school children and the consensus from both the school community and borough officers is that from an air quality perspective, the closure increases children's exposure to pollution and should be revisited.

5.3.4. The desire from attendees of the audit was for the footbridge to remain open to provide a safer and less polluted route to / from school and remove the toucan crossing that creates a lot more stop / start traffic directly adjacent to the school. It is understood that TfL has committed to maintaining the footbridge and reviewed at its planned inspections or if a safety defect is called in. It also intends to undertake further observations of the traffic signals and potentially implement changes to timings if found to be appropriate.

5.3.5. Ultimately, following an internal review of the information gathered at the audit and lessons learned from the other audits that have taken place, the report recommends the following three prioritised measures in addition to that above.

School Street

5.3.6. The implementation of a 'School Street' on Winchester Road was also identified. This would not only contribute towards reducing sources of emissions in a localised area, it would also help create a safer, more pleasant environment for children / parents travelling to school. Reducing the volume of traffic on Winchester Road in the peak pick-up and drop-off hours should:

- Reduce road danger from traffic
- Reduce pollution around the school gates from idling vehicles;
- Promote more walking, cycling and active lifestyles for pupils and parents.

5.3.7. It is envisaged to include signage to inform drivers of the restrictions and the implementation of cameras to enforce the restrictions. Vehicles contravening the traffic order will be automatically

issued a Penalty Charge Notice (PCN). This could be undertaken as a trial for say, nine months before a decision is made on whether to make it permanent. If appropriate, the borough could seek to redeploy the camera at other school sites which would benefit from a school street. This approach is being progressed by other boroughs, who are seeking to use the camera technology to enforce a wide range of contraventions (inc. inappropriate use of bus lanes) to minimise any costs associated with the scheme.

Green Infrastructure

- 5.3.8. It was agreed that one of the key measures that should be progressed is the green wall along the school perimeter on Winchester Road and the A316 Chertsey Road. The school has already raised funding to commence this work and requires further funding to complete this project, that will help improve air quality and providing a 'greener' and healthier feel to the school. Existing research undertaken by Kings College London has shown that the installation of an ivy screen can lead to a decrease in the pollution concentrations once matured. This was tested at St Matthias Primary School in the Royal Borough of Kensington and Chelsea and resulted in a 24% reduction of exposure to NO₂ and 38% for PM₁₀. It should be noted however that the same level of reduction would not necessarily be achieved in each instance, as the local conditions and designs are specific to each site



Weight Restrictions / Rat Running

- 5.3.9. At present there is a significant amount of queuing travelling eastbound on the A316 in the AM peak (illustrated on the right) which coincides with when children are travelling to school. The school commented on the fact this leads to many vehicles seeking to use the quieter roads of Brook Road and Margarets Grove, also used by children walking to / from school.
- 5.3.10. It is considered a review of weight restrictions on these roads would reduce the through traffic experienced. A traffic survey to understand current usage / type of vehicles would need to be undertaken to ensure the appropriate restrictions are implemented.



5.4 STARS ACCREDITATION SCHEME FOR SCHOOLS

- 5.4.1. STARS is TfL's world leading school travel accreditation scheme, inspiring young Londoners to travel smarter and more sustainably, and should form the framework within which the behaviour change related components of the above recommendations are recorded.
- 5.4.2. Many of the recommendations would also serve to contribute towards the required 'travel activities' and 'support activities' required to attain / maintain Gold status – which should ultimately be the aim for the school.
- 5.4.3. Equally by embracing the STARS process, delivering sustainable travel activities, achieving modal shift targets and demonstrating effective community engagement, the school will have successfully delivered air quality improvements through reduced travel by cars. The framework of STARS enables the school and borough to document, track and share their continued progress, and embed and implement the recommendations throughout the school community.
- 5.4.4. Schools are encouraged to note any air quality related activity undertaken on their TfL STARS profile stars.tfl.gov.uk, and to help inspire other schools, they are required to tell their story for each activity they have delivered.
- 5.4.5. **Table 3** outlines the requirements for achieving the Bronze, Silver and Gold accreditation. St Stephen's Primary School recently achieved Gold accreditation.



Table 3 - STARS Scheme Accreditation Requirements

| Bronze | Silver | Gold |
|--|--|--|
| <ul style="list-style-type: none"> – Complete 10 different 'travel activities' from the list of 80. Evidence is not required but it is recommended. – Complete 6 different 'supporting activities' from the list of 40. Evidence is not required but it is recommended. – Complete a hands up survey (with a respondent rate of at least 90%) to get a baseline understanding of how pupils get to school – Set targets for a minimum of two modes | <ul style="list-style-type: none"> – Complete 20 different 'travel activities' from the list of 80. Evidence is required and must be submitted to the STARS website. – Complete 10 different 'supporting activities' from the list of 40. Evidence is required and must be submitted to the STARS website. – Demonstrate that a shift away from the car has been achieved through hands up survey results – Record its staff travel patterns, through the same hands up survey method – Set up a School Travel Plan working group with student representatives – Present various bits of evidence of pupil, governor, staff and school council involvement (such as meeting minutes) | <ul style="list-style-type: none"> – Complete 25 different 'travel activities' from the list of 80. Evidence is required and must be submitted to the STARS website. – Complete 15 different 'supporting activities' from the list of 40. Evidence is required and must be submitted to the STARS website. – Demonstrate that mode share has been shifted away from the car by at least 6%, or that 90% of travel is done by non-car modes – Demonstrate that the targets from the last academic year were achieved or exceeded – Demonstrate that residents and neighbours are aware of the school's plans to promote safer and more active travel |

| | | |
|--|--|---|
| | <ul style="list-style-type: none"> – Conduct consultation with parents and show results of this – Carry out research and/or consultation | <ul style="list-style-type: none"> – Demonstrate that the travel plan is an agenda item on at least one senior management meeting per year – Demonstrate that safe and active travel is part of the School Development Plan |
|--|--|---|

5.4.6. Our recommended measures for the school include a number of initiatives that would also count towards maintaining their Gold STARS scheme accreditation, including: ‘anti-idling awareness raising measures’ and ‘school play streets’. STARS activity cards are available for these measures, as well as wide range of other topics <https://stars.tfl.gov.uk/Explore/Idea>.

5.5 HEALTHY SCHOOLS LONDON

5.5.1. The Healthy Schools London programme should also as framework for promoting sustainable transport measure that will contribute towards improved local air quality. To achieve the Healthy Schools London Bronze award, one of the criteria is that “*the school promotes active travel to and from school*”, and provides a number of examples, including:

- By implementing a school travel plan and running active travel initiatives such as:
- walk/cycle to school days
- walkers/cyclers breakfast clubs
- cycling at break times
- pedestrian skills and cycle training
- active travel competitions
- accreditation programmes

5.5.2. The schools must complete the following statements:

- Active Travel is promoted by:
- School travel plan: Date awarded/reviewed
- Active travel initiatives including:

5.5.3. Our recommended measures for the school include a number or initiatives that would also count towards these criteria, including a variety of proposals to promote improved environments for walking, scooting and cycling, and initiatives to promote behaviour change and raise awareness of benefits of active travel.

5.6 AIR QUALITY ALERTS

5.6.1. When high and very high air pollution is forecast, air quality alerts are displayed at many public locations across London including 2,500 bus stop countdown signs and all Tube stations. Alerts and guidance are also available via social media, an app and a text alert service providing information and guidance on the alert level.

5.6.2. The Mayor has recently (January 2018) expanded his existing air quality alerts systems and appointed King’s College London to continuously monitor air pollution using the existing air quality

monitoring network and cutting-edge modelling tools, delivering alerts as required. They will also directly notify a wider group of stakeholders so that the alerts are disseminated more widely and targeted at Londoners who are most vulnerable to the impacts of poor air, including schools.

- 5.6.3. Each school has been provided with further information via email on what the alert means, and how to reduce pupils' personal exposure, and they can contact AirQualityLondon@london.gov.uk for more information.

5.7 ENGAGEMENT

- 5.7.1. Engagement activities to raise awareness of the issue of air quality amongst children and the school community are fundamental to achieving change.

MAYOR'S LONDON CURRICULUM PROGRAMME

- 5.7.2. The London Curriculum offers a wide range of high-quality teaching resources supporting most subjects on the national curriculum, CPD for teachers and events for children.

Resources and activities are inspired by the city's diverse culture, heritage, science and technology, built environment, green spaces and rivers.

- 5.7.3. The Mayor of London's Air Quality Audits will be supported by a new programme of targeted activity delivered through the London Curriculum. The focus of the programme is to support teacher subject knowledge, and confidence to tackle air quality as a science subject recognising that this requires a wide knowledge and skill base of science, statistics and mapping. Activities associated with the above is detailed in Appendix C, for delivery by the schools / London Curriculum during the spring and summer terms, and summarised below:



AUTUMN TERM

- WSP undertake school AQ audits
- London Curriculum engage with schools / school champion.
- By mid-October publish forward dates for spring term activity.
- Publish London.gov. web page which brings together the offer.

SPRING TERM - TEACHER FOCUSED ACTIVITY

- STEM Learning package of available cpd on air quality
- RGS primary school geography network meeting
- ESRI training on mapping software for schools
- GLA provides schools with results and recommendations from WSP's audits, including outputs to be used for lesson material to use in future projects / initiatives.

SUMMER TERM - PUPIL FOCUSED ACTIVITY

- Schools undertake project with pupils.
- National Clean Air Day June 2018.
- Support from IRIS/Science Learning Partnership/STEM Ambassador TBC.
- Schools recognition of air quality projects/celebration TBC.

HEALTHY EARLY YEARS LONDON (HEYL)

- 5.7.4. Building on the success of Healthy Schools London, Healthy Early Years London is an awards scheme funded by the Mayor of London that supports and recognises early years setting achievements in child health, wellbeing and school readiness. Healthy Early Years London focuses on the whole child and gives settings a framework for their activity with children, parents, carers and staff and the wider community. HEYL will help to reduce health inequalities by creating environments which support a healthy start to life and promote a whole setting and targeted approach across a number of themes including Sustainability-active travel and air quality.
- 5.7.5. HEYL complements and enhances the statutory Early Years Foundation Stage (EYFS) framework, providing further focus on children, families and staff health and wellbeing. There are 4 levels of Awards: HEYL First Steps, Bronze, Silver and Gold. HEYL can be used as an improvement tool to support practice in all Early Years settings including active travel:

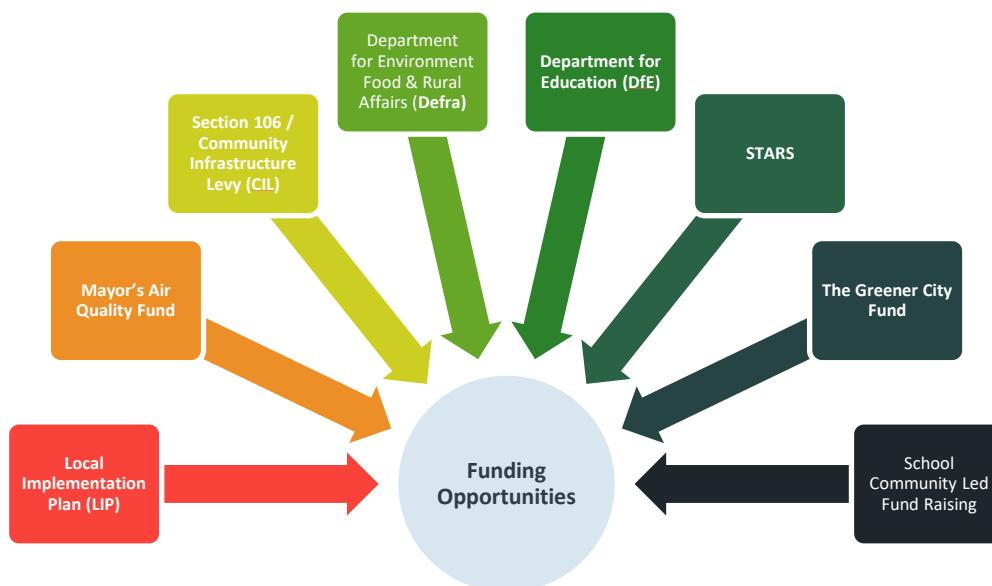
- Active travel is supported and encouraged, both for journeys to and from the setting and for trips (e.g. walking, scooting)
- The setting is signed up to receive air quality alerts from www.airtext.info/alerts
- There are activities and information available for parents and carers to support sustainability including: active travel, recycling or energy saving
- Practitioners are able to discuss and advise parents and carers on active travel

- 5.7.6. The full programme is due for official launch in spring 2018 which is intended to reach all 13,000+ settings and providers of childcare across London.

5.8 FUNDING OPPORTUNITIES

5.8.1. A wide range of potential funding sources are available and should be considered to progress some of the measures outlined above, as set out in the figure below.

Figure 10 – Summary of funding opportunities



5.8.2. Below, we discuss each of these in turn and set out the criteria associated with obtaining these funding opportunities, to enable the borough / schools to understand what measures they could progress with the funding opportunities that exists.

Local Implementation Plan (LIP)

5.8.3. A primary source of funding is linked to the Local Implementation Plan (LIP) 3 that will provide spending from April 2019 until April 2020, with bidding closing in October 2018. The guidance on bidding specifically references the need to improve air quality at schools:

*'2.34 In the short- to medium-term, there must be a particular focus on action to reduce air, pollution, reducing exposure to it and tackling pollution hotspots, which boroughs should support through their LIP. Locations that have large numbers of vulnerable Londoners, such as schools, should be prioritised for action. **In particular, the boroughs have an important role in ensuring recommendations from the Mayor's school air quality audit programme are implemented, and LIP funding can be directed at both the audits and the delivery of measures.'***

5.8.4. It is expected that recommendations from the audits can be implemented by the London boroughs using funding from TfL's Local Implementation Plan (LIP) funding stream, but this is subject to boroughs prioritising this area. It is ultimately at the discretion of the borough to follow this guidance and allocate money to fund the measures outlined above.

5.8.5. Whilst the Mayor has allocated funding for the first 50 audits, he expects the London boroughs to roll this out so that every school that is located in an area of high pollution can benefit from this approach. LIP funds are a source of funding for this, and guidance is being developed, alongside an audit toolkit and template, to be used locally to complete school air quality audits for other schools.

Mayor's Air Quality Fund (MAQF)

5.8.6. The MAQF is a £20 million fund, over ten years to support new projects by London boroughs to improve air quality. The first round of funding supported a wide range of projects, including: freight consolidation, green walls, low emission vehicles, reducing pollution from construction sites and digital signage to reduce engine idling.

5.8.7. In summer 2018, the third round of MAQF funding will open for applications (for projects commencing in April 2019).

Section 106 / Community Infrastructure Levy (CIL)

5.8.8. Section 106 (S106) agreements and Community Infrastructure Levy (CIL) are potential sources of funding towards measures to address local air pollution.

5.8.9. S106 agreements, also known as planning obligations, are legal agreements made between local authorities and developers, and designed to address issues that new developments may cause or worsen on local infrastructure. The content of a S106 agreement is agreed during the consultation period of the planning application and the agreement is prepared by the council's solicitor.

5.8.10. A Community Infrastructure Levy (CIL) is a planning charge introduced by the government via the Planning Act 2008. It provides a means of ensuring that a new development contributes to the cost of the infrastructure that the development will rely on, such as schools and roads.

5.8.11. The levy applies to most new buildings and charges are based on the size and type of the floor space being created. The idea behind the CIL is that it's fairer, faster and more certain than the system of S106 planning obligations, which are negotiated on a case-by-case basis and that contributions can be sought in accordance with local policy objectives.

Liveable Neighbourhoods

5.8.12. A Liveable Neighbourhood scheme will deliver attractive, healthy and safe neighbourhoods for people and involves changes to improve conditions for walking and cycling and reducing traffic dominance – all of which can play a part in reducing air pollution. The types of measures that can be funded via this programme may include new pedestrian crossings, a network of good cycle routes, redesigned junctions, restrictions on motor traffic in town centres as well as wider improvements against each of the ten Healthy Streets Indicators.



5.8.13. The programme has a budget totalling £85.9m over the five financial years (2017/18 – 2021/22), excluding the funding for the remaining Major Schemes that will be completed during this period.

Although costs will vary considerably from scheme to scheme, it is expected that TfL contributions for most schemes will fall within a range of £1m to £10m, with the majority probably under £5m.

Department for Environment Food & Rural Affairs (Defra) Air Quality Grant Scheme

- 5.8.14. Defra's air quality grant scheme provides funding to eligible local authorities to help improve air quality. The scheme helps local authorities to make air quality improvements and to meet their statutory duties under the Environment Act 1995. It has awarded over £52 million in funding to a variety of projects since it started in 1997.
- 5.8.15. It is noted that the applications for 2017 to 2018 has now passed (December 2017) but it is recommended that Local Authorities submit future applications to implement some of the measures outlined within this report. It is noted that LA's have previously successful applied for funding some behavioural / awareness raising measures. For example, the London borough of Islington was awarded £50,000 as part of a school focussed awareness and engagement campaign.

Department for Education (DfE)

- 5.8.16. There may be scope for delivering some of the measures identified through DfE funding for school buildings and land, including capital funding for schools and academies, such as the Condition Improvement Fund, Priority School Building Programme, Early Years Capital Fund.
- 5.8.17. Additionally, the Salix Energy Efficiency Loan Scheme provides funding for schools and colleges through DfE, to reduce energy costs through the installation of energy efficiency technologies. This funding would apply to measures designed to reduce emissions through improving building energy use – such as replacing an older boiler with a heat pump, or increasing building insulation. To receive funding a project would need to save energy as well as improve air quality, and energy savings would need to have a payback period of eight years or less. In addition, the project must not exceed a maximum cost of £200 per tonne of CO₂ saved.



Greener City Fund

- 5.8.18. The Mayor's Greener City Fund (www.london.gov.uk/greenercity) includes a range of programmes to create and improve green spaces and encourage tree planting in London. This is part of the Mayor's commitment to making a London a National Park City.
- 5.8.19. Two grant schemes, offering grants between £5,000 and £50,000 are open to applications from schools:

- Community Tree Planting Grants will support applicants to plant trees and help improve children's access to nature. This includes supporting tree planting in areas where there are currently low levels of tree cover, or where trees could help tackle issues such as air pollution. The next funding round will open in spring 2018 for projects to take place in the winter 2018/19.
- Community Green Space Grants aim to improve and increase green space across London, and can include greening playgrounds or routes to school, or natural play space for children. The next funding round will open in summer 2018 for projects to take place in 2019.

RE:FIT

- 5.8.20. RE:FIT London is jointly funded by the GLA and the European Union European Regional Development Fund, and is helping to achieve the Mayor's aim for London to be a zero carbon city by 2050. The programme is designed to help public sector organisations save carbon, energy and money by retrofitting buildings to make them more energy efficient, from simple measures like lighting and controls to solar panels. Since it was established in 2009 the programme has not only reduced carbon emissions, but also resulted in large guaranteed energy savings (typically around 15-25%).
- 5.8.21. The RE:FIT London Programme Delivery Unit is an expert team which provides free end to end support to deliver projects.
- 5.8.22. The RE:FIT framework of energy service companies saves time and resources for organisations that are procuring retrofit services and works and – because it is an energy performance contracting framework - guarantees energy and cost savings. Schools in particular benefit from being able to procure through this framework via a fast-track route. Further information is available at www.london.gov.uk/refit

TfL STARS Reward Scheme

- 5.8.23. Whilst there is no specific funding attached to STARS, as gaining STARS accreditation helps boroughs to achieve their targets for reducing school related car travel, and increasing cycling and walking, they often choose to link it to incentives – such as local grant funding through their LIP programmes and priority access to other opportunities.
- 5.8.24. It is important for boroughs to highlight that a possible benefit of getting STARS Accreditation is that it will potentially enable them to access funding for a variety of measures that contribute towards improving air quality and health. In broad terms, funding can be secured if the proposed measure:

- Promotes one aspect of safer and smarter travel choices (walking, cycling, scooting, safer / smarter driving, public transport and road safety).
- Helps the school reduce congestion (and pollution) in the vicinity of the school.

- 5.8.25. Ideas can include, but are not limited to:

- Training – pedestrian skills, scooter safety, balance bike, cycling
- Cycling – storage, helmets, pool bikes, bike market, Dr Bike
- Resources – sustainable travel and road safety books, reflective and fluorescent products
- Staffing – supply cover to allow STP staff training and workshop attendance.

- 5.8.26. It is increasingly important that boroughs seek to create a portfolio of funding opportunities, and with that in mind other potential funding sources include:

- **Local Clinical Commissioning Groups.(CCG)** - <https://www.nhscc.org/ccgs/>
- **Health and Wellbeing Boards:**
https://www.gov.uk/government/uploads/system/uploads/attachment_data/file/215261/dh_131733.pdf
- **Charitable Trusts**
- **Local business funding**
- **Consortium approach** – pooling funding with other boroughs and achieve economies of scale

Other Funding Sources

- 5.8.27. There are several grant funding bodies who may be interested in funding recommendations particularly if a borough links up with a community organisation - <https://www.dsc.org.uk/category/fundraising/funding-sources/>
- 5.8.28. Boroughs could also seek to influence the Joint Strategic Needs Assessment process undertaken by Health and Well Being Boards and Directors of Public Health. This is the process which looks at local clinical, health and well -being population needs, and on which CCGs base their funding priorities.

Other sources of funding for green infrastructure

- 5.8.29. Potential sources of funding for green infrastructure in schools include:

- The Tree Council's **Trees for Schools** programme offers grants between £100 and £700 to fund tree planting www.treecouncil.org.uk/grants/trees-for-schools
- The **Woodland Trust** offers free trees for schools www.woodlandtrust.org.uk/get-involved/schools/trees-for-schools/
- The **Gregg's Foundation Environmental Grants** offer up to £2,000 for projects that improve the physical environment in a way that will improve people's lives, including in schools where the project is accessible to the wider community www.greggsfoundation.org.uk/environmental-grant
- **Tesco Bags of Help** offer up to £4,000 to a wide range of projects, including environmental improvements to school grounds www.groundwork.org.uk/Sites/tescocommunityscheme
- **The Big Lottery Fund's Awards for All programme** offers up to £10,000 for a wide range of projects that "improve the places and spaces that matter to communities", including schools www.biglotteryfund.org.uk
- **Learning Through Landscapes Nature Grants Scheme** –grants will re-open in Spring 2018 www.ltl.org.uk/naturegrants
- **Trees for Cities** – are a charity able to match-fund the remaining shortfall after the financial contribution towards the project from the land owner. Their most notable schools programme is the Edible Playgrounds programme, which includes the design and creation of an edible teaching garden space within school grounds. Their other programmes include School Greening projects (mini forest style spaces, wildlife areas, biodiversity features) and Trees for Schools, a programme funded by Defra and delivered in partnership with the Woodland Trust. <https://treesforcities.org/projects/schools/>
- **Groundwork London** – are an environmental regeneration charity specialising in community-based green interventions and behaviour change, with a team of Landscape Architects and community officers who can support schools in designing and implementing green interventions,

supporting the curriculum and taking a 'whole school' approach to understanding air quality. They also manage programmes that could offer funding for schools in considering their interventions, and fundraising support. Contact londonairquality@groundwork.org.uk, www.groundwork.org.uk/london

School Community Led Fund Raising Initiatives

- 5.8.30. As well as the specific funding opportunities outlined above, there is an important role for the School, Ward Councillors, the Parent's Teachers Association (PTA) and School Governors, both in a lobbying and leadership capacity, and as vehicles for fundraising to support and promote particular measures and initiatives.

5.9 MONITORING

- 5.9.1. An important outcome of the school air quality audits will be in assessing the effectiveness of different schemes and initiatives implemented, so that the findings can be used to continually update and refine the toolkit of measures for use in future audits.
- 5.9.2. Whilst it will likely prove difficult to disaggregate the impact of a range of measures when implemented simultaneously, by recording this information across all participating schools in London, and pooling the findings, it will provide some useful overall insights into what types of solutions work best in practice amongst a given set of conditions.
- 5.9.3. In order to undertake these assessments and build on the existing evidence available, it will be essential to establish an effective baseline dataset, and plan a programme of monitoring post implementation of any measures. This monitoring may include a wide range of metrics including surveys, traffic information, and air quality monitoring. The scope for monitoring should be proportionate to the extent of the problem and the scale of the investment.
- 5.9.4. Where possible such monitoring should cover:

- Key pollutants (NO_x, PM₁₀, PM_{2.5}), and/or
- a range of other suitable metrics (i.e. travel to school mode shares, STARS and Healthy Schools accreditations, traffic counts (as a proxy for road transport emissions), school buildings and boiler conditions, surveys and behavioural responses of parents/staff).

- 5.9.5. The Mayor recently announced the trial of new air quality monitoring sensors in hundreds of hot spots across London, including schools, as well as fleet of mobile sensors, which if successful may be used to monitor localised air quality around the school, in addition to the network of existing monitors when already located near the school.
- 5.9.6. The GLA will be seeking to maintain the dialogue with boroughs, and to facilitate the sharing of findings and experiences as different measures and initiatives are implemented following the audits. This will enable an assessment of their effectiveness in reducing sources of, or exposure to, local air pollution. It is envisaged this will take place 6-12 months after the audit programme is concluded.

Chapter 6 – Next Steps

6 NEXT STEPS

6.1.1. Based on our experiences in undertaking the audit, we found there to be a passionate group of individuals representing both the school and the borough council, who were eager to make a difference, and enthusiastic about delivering a range of solutions to improve local air quality for the children, and the wider community as a whole.



6.1.2. The borough and key stakeholders should investigate the scope for rapidly delivering key measures from the recommendations, in order to achieve a combination of quick win improvements for the school, but also thinking more holistically about how some of the medium to longer term recommendations can be progressed, to deliver transformational change, to the lasting benefit of future generations.'

6.1.3. By participating in this audit the following steps have been completed:

- Identified the sources of outdoor air quality and potential exposure by primary school children.
- Engaged school communities, including in a review of their TfL STARS travel plan, educating stakeholders about the impacts of air pollution and providing recommendations on activities, initiatives and policies that the primary school could implement to further reduce emissions and/or exposure.
- Engaged with the borough to inform the feasibility of the proposed recommendations.
- Recommendations for the boroughs consideration and future implementation.

6.1.4. In order to take forwards the recommendations identified within this report, the borough council will need to continue to work closely with the school and local community, building on the relationships already in place.

6.1.5. A wide range of potential funding sources are identified within the report, and borough councils and schools are encouraged to apply for these where appropriate to maximise the potential for delivering the recommendations.

6.1.6. The School and wider school community, including School Governors, have an important leadership role in ensuring that measures to reduce exposure and emissions are included in the school's strategic plan.

6.1.7. STARS is an ongoing process, and the school should continue working towards the targets they have set, and continue adding to their air quality related activities, and uploading evidence to contribute towards achieving and sustaining higher levels of accreditation.

6.1.8. An important outcome from this project will be to build on our knowledge of how effective different measures prove to be over time, so that the findings can be used to continually update and refine the toolkit of measures for use in future audits.

- 6.1.9. We also hope that the borough and school will come together as part of a wider School Air Quality forum, to share their experiences with other boroughs and schools facing similar challenges.
- 6.1.10. A wide range of guidance and useful literature is available to support further studies, schemes or initiatives with the aim of improving local air quality:

- **GLA** – Local Authorities and Air Quality – A summary of action taken by London boroughs to improve air quality - https://www.london.gov.uk/sites/default/files/borough_air_quality_report_2017_final_2.pdf
- **GLA** – Updated Analysis of Air Pollution Exposure in London https://www.london.gov.uk/sites/default/files/aether_updated_london_air_pollution_exposure_final_20-2-17.pdf
- **British Lung Foundation** - Air Pollution Guidance for School Staff (https://neu.org.uk/system/files_force/publication-files/NEU%20BHF%20air%20pollution%20guidance%20FINAL.PDF?download=1)
- **DfE** - Guidelines on ventilation, thermal comfort, and indoor air quality in schools
- **Better Places for People** (World Green Building Council) – Indoor Air Quality at Schools

Appendix A – The Mayor's commitment to improving air quality: Key Documents

The Mayor's commitment to improving air quality: Key Documents

The Mayor is implementing a significant programme of measures to reduce London's deadly air pollution and protect the health and wellbeing of all Londoners, enshrined within the following key documents:

- **The London Environment Strategy** – a bold and ambitious strategy, with a particular focus on air quality. This is the first strategy to bring together approaches to every aspect of London's environment, including: air quality, green infrastructure, climate change mitigation and energy, waste, adapting to climate change and ambient noise.
https://www.london.gov.uk/sites/default/files/london_environment_strategy_draft_for_public_consultation.pdf
- **The Draft London Plan** - published in November 2017, places a considerable emphasis on air quality, with policy S11 stating that London's air quality should be significantly improved, and exposure to poor air quality, especially for vulnerable people, should be reduced.
<https://www.london.gov.uk/what-we-do/planning/london-plan>
- **The Mayor's Transport Strategy 2018** - The Mayor has set out ambitious plans to improve transport in London over the next 25 years in his draft Transport Strategy. It includes record investment in new and improved rail, tube and bus services, an unprecedented focus on walking and cycling, and a commitment to make the entire transport system zero-emission by 2050.
<https://www.london.gov.uk/sites/default/files/mayors-transport-strategy-2018.pdf>
- **Expanding the Ultra Low Emission Zone (ULEZ) and tightening the Low Emission Zone (LEZ)**
https://consultations.tfl.gov.uk/environment/air-quality-consultation-phase-3b/user_uploads/supporting-information-document-updated-12.12.17.pdf

A wide range of further information, guidance, funding and useful literature is available to support further studies, schemes or initiatives with the aim of improving local air quality, including, but not limited to:

- **Local Authorities and Air Quality** – A summary by the GLA of action taken by London boroughs to improve air quality -
https://www.london.gov.uk/sites/default/files/borough_air_quality_report_2017_final_2.pdf
- **Updated Analysis of Air Pollution Exposure in London** – GLA
https://www.london.gov.uk/sites/default/files/aether_updated_london_air_pollution_exposure_final_20-2-17.pdf
- **British Lung Foundation** - Air Pollution Guidance for School Staff
(https://neu.org.uk/system/files_force/publication-files/NEU%20BHF%20air%20pollution%20guidance%20FINAL.PDF?download=1)
- **Guidelines on ventilation, thermal comfort, and indoor air quality in schools** – DfE -
<https://www.gov.uk/government/consultations/ventilation-thermal-comfort-and-indoor-air-quality-in-schools>
- **Better Places for People** (World Green Building Council) – Indoor Air Quality at Schools -
<http://www.worldgbc.org/sites/default/files/Better%20Places%20for%20People%20-%20Schools%20Briefing%20Notes%20-IAQ.pdf>
- **Air quality alerts** - Each school has been provided with further information via email on what the alert means, and how to reduce pupils' personal exposure AirQualityLondon@london.gov.uk
- **Control of Dust and Emissions during Construction and Demolition SPG** prepared by the GLA, which includes requirements for construction sites to monitor air quality and share the results with the borough – <https://www.london.gov.uk/what-we-do/planning/implementing-london-plan/supplementary-planning-guidance/control-dust-and>
- **The Mayor's Greener City Fund** - www.london.gov.uk/greenercity
- **RE:FIT London** - jointly funded by the GLA and the European Union European Regional Development Fund, and helping to achieve the Mayor's aim for London to be a zero carbon city by 2050 as part of the Mayor's £34m Energy for Londoners programme. The programme is designed to help public sector organisations save carbon, energy and money by retrofitting buildings to make them more energy efficient. The RE:FIT framework of energy service companies saves time and resources procuring retrofit services and works. Schools in particular benefit from being able to procure through this framework via a fast-track route. Further information is available at www.london.gov.uk/refit

MAYOR OF LONDON

Appendix B – Audit Template

SCHOOL AIR QUALITY AUDIT TEMPLATE

School Name:

Address:

Key Telephone Contact:

Key Email Contact:

Head Teacher:

School Staff (name/role):

School Staff (name/role):

School Staff (name/role):

Borough Name:

Sub-region:

Borough AQ Officer:

Borough TP Officer:

Borough School Transport Officer:

WSP Auditor/s:



Audit Date:

Audit Time:

Weather Conditions:

Any exceptional circumstances:

Notable Events/ Traffic incidents:

Background Information

1. Pupil Numbers:

2. Building Description

3. School Building Age

a. Any extensions (building age)

b. Any planned growth?

c. BREEAM rating (if available)

4. Mode share and trip numbers, recent trends

a. Walk

b. Cycle

c. Public Transport

d. Car

e. Other

5. STARS status:

6. Local Area Type

a. City Centre

b. Major Centre

c. Metropolitan Centre

d. Suburban

e. Residential

7. Road Type

a. TLRN Road

b. Main Road

c. Near Main Road

d. Residential Street

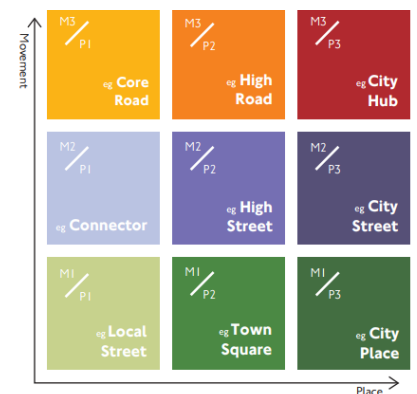
e. Cul-de-sac

9. Proximity to Road

Distance to largest adjacent road (m):

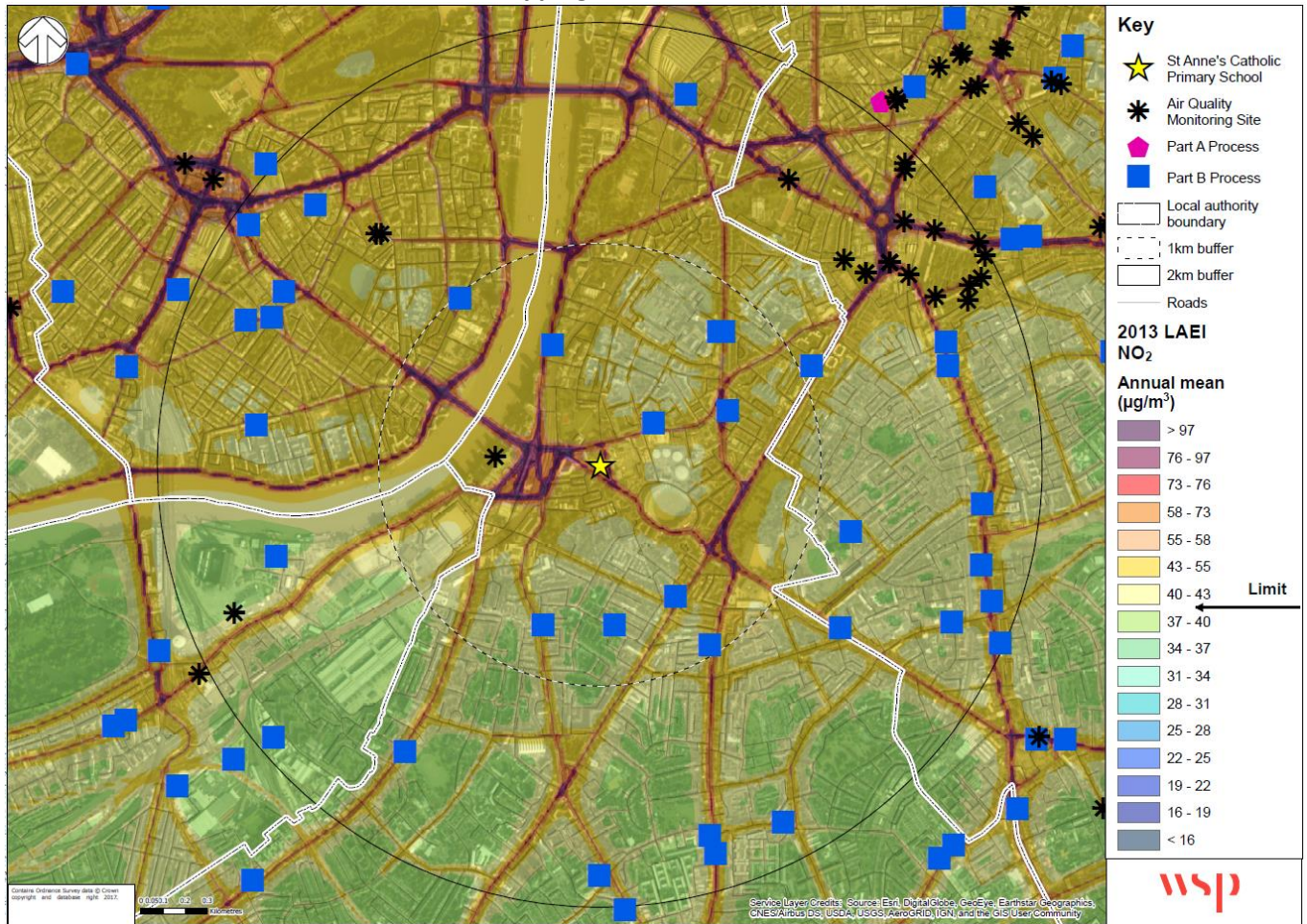
10. Context Notes from School/Borough:

8. Street Type (Movement/Place)

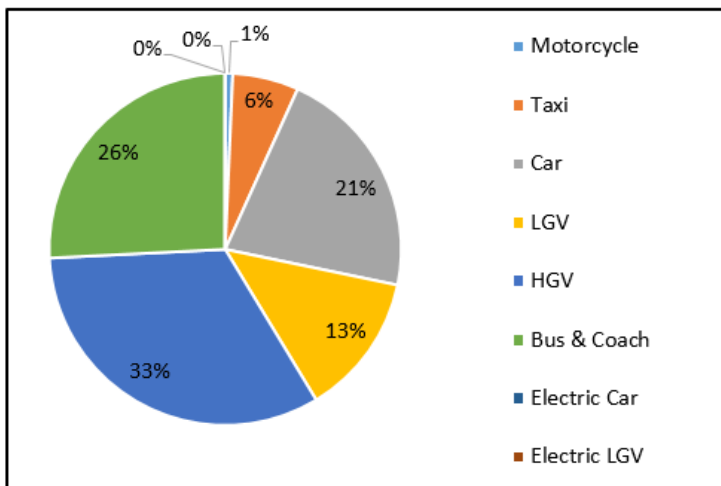


AIR QUALITY MODELLING RESULTS

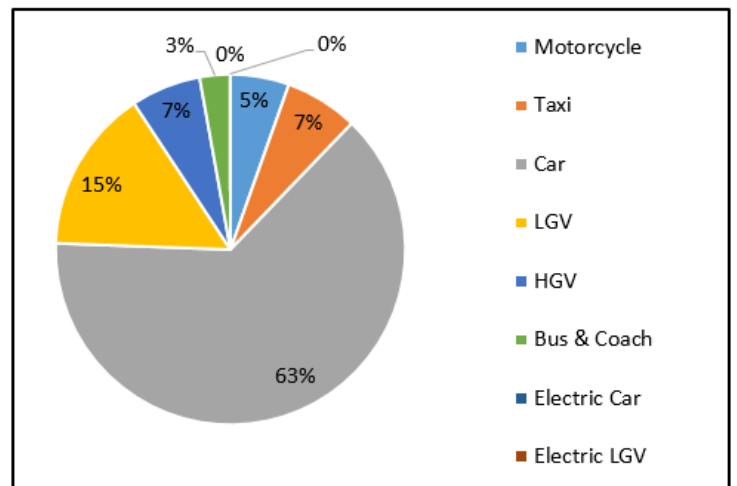
NO2 Mapping



Road Transport Emissions – Split by Source Sector



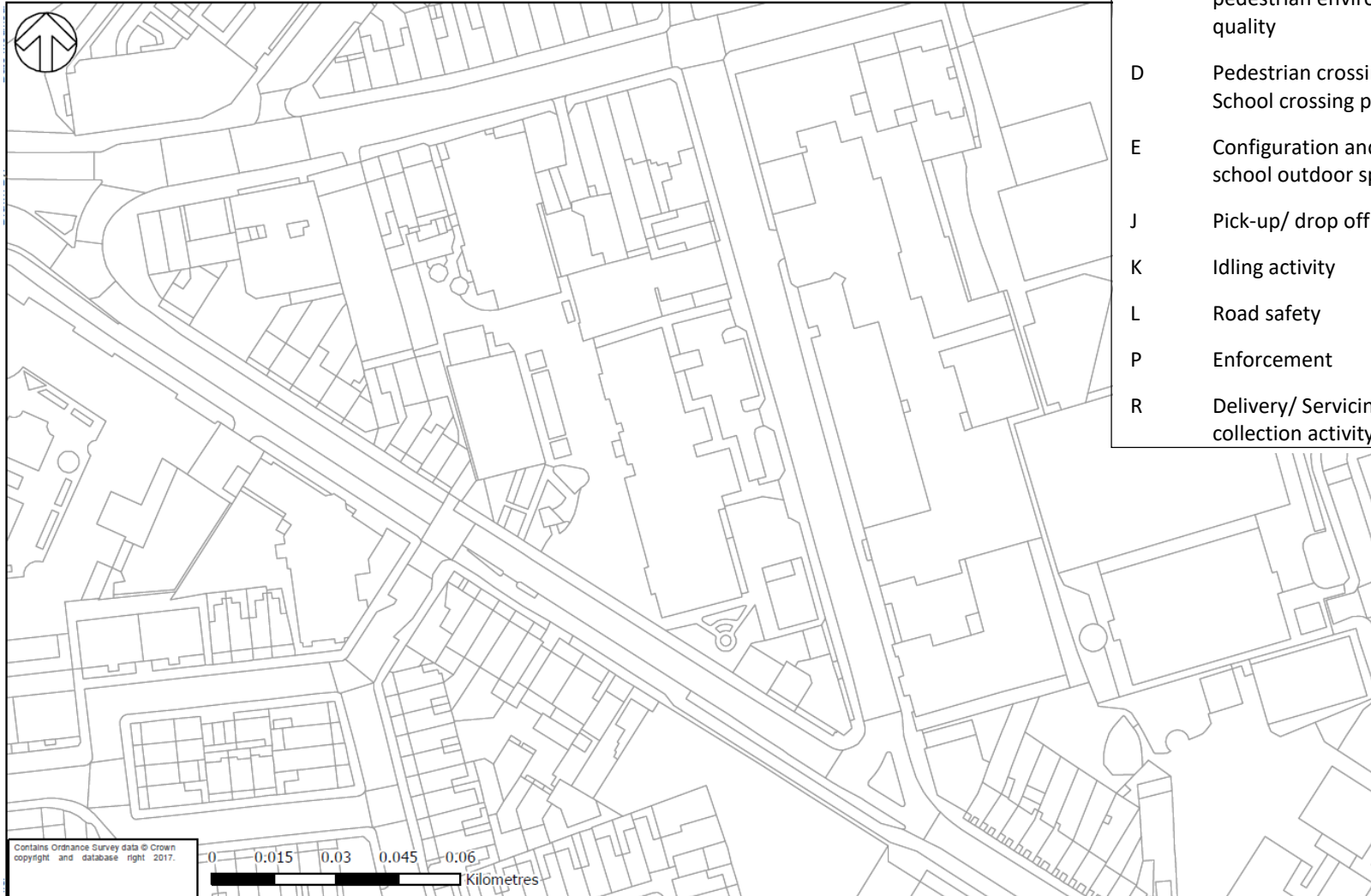
Road Transport Volumes (Split by Type)



SCHOOL GROUNDS AUDIT CHECKLIST

- 1) Work through checklist - Label each observation/issue with applicable letter (A, B, C)
- 2) Add number prefix if multiple (A1, A2)
- 3) Verify context plan – i.e. bus stop, tube station locations

| School Grounds Checklist | | S | School Visitor parking |
|--------------------------|---|---|--|
| A | Vehicle access & egresses | T | School Staff parking |
| B | Pedestrian access & egresses | U | School Vehicles (i.e. Minibus) |
| C | Key walking routes and pedestrian environment quality | V | Other Parking |
| | | Y | Cycling environment quality |
| D | Pedestrian crossings/ School crossing patrols | Z | Extent of Trees/ Shrubs/ Green barriers |
| E | Configuration and use of school outdoor space | * | Emissions from on-site energy generating plant |
| J | Pick-up/ drop off activity | + | Localised industrial sources |
| K | Idling activity | ! | Construction activity |
| L | Road safety | # | Street canyons |
| P | Enforcement | | |
| R | Delivery/ Servicing/ waste collection activity | | |



| SCHOOL GROUNDS OBSERVATION NOTES | Source (i.e. factors influencing output of harmful emissions) | Exposure (i.e. factors influencing movement of children through an area, or waiting in an area) | Feedback Notes (i.e. from consultations, during observations/brainstorming session) |
|---|---|--|--|
|---|---|--|--|

| | | | |
|--|--|--|--|
| | | | |
|--|--|--|--|

SCHOOL APPROACHES AUDIT CHECKLIST

- 1) Work through checklist - Label each observation/issue with applicable letter (A, B, C)
- 2) Add number prefix if multiple (A1, A2)
- 3) Verify context plan – i.e. bus stop, tube station locations



School Approaches Checklist

- C Key walking routes and pedestrian environment quality
- D Pedestrian crossings/ School crossing patrols
- F Other pedestrian waiting spaces
- G Traffic volumes, flow and composition
- H Congested junctions
- I Road widths, speed limit and traffic calming measures
- J Pick-up/ drop off activity
- K Idling activity
- L Road safety
- M Road access restrictions
- N School Keep Clear hatching
- O Waiting and Loading restrictions
- P Enforcement
- Q Bus stops/ Coach stops
- R Delivery/ Servicing/ waste collection activity
- S School Visitor parking
- T School Staff parking
- U School Vehicles (i.e. Minibus)
- V Other Parking
- W On-street parking restrictions
- X Key nearby attractors/ traffic generators
- Y Cycling environment quality
- Z Extent of Trees/ Shrubs/ Green barriers
- * Emissions from off-site energy generating plant
- + Localised industrial sources
- ! Construction activity
- # Street canyons

| SCHOOL APPROACHES OBSERVATION NOTES | Source (i.e. factors influencing output of harmful emissions) | Exposure (i.e. factors influencing movement of children through an area, or waiting in an area) | Feedback Notes (i.e. from consultations, during observations/brainstorming session) |
|--|---|--|--|
|--|---|--|--|

| | | | |
|--|--|--|--|
| | | | |
|--|--|--|--|

EXTERNAL CHECKLIST FACTORS – GUIDANCE FOR AUDITORS

| Checklist Factors | Description | School Grounds | School Approaches |
|-------------------|--|--|-------------------|
| A | Vehicle access & egresses | Level of activity (indic % of total movements) | x |
| B | Pedestrian access & egresses | Level of activity (indic % of total movements) | x |
| C | Key walking routes and pedestrian environment quality | Pedestrian Desire lines catered for? Footway widths (distance of peds from carriageway). Barriers/ obstacles to walking? Lighting? Public realm quality? Pedestrians from all walks of life? Shade and shelter? Places to stop and rest? Not too noisy? People feel safe? Things to see and do? People feel relaxed? | x |
| D | Pedestrian crossings/ School crossing patrols | Proximity to emissions sources? Safety. Convenience. Routed over crossing in proximity to traffic emissions? Wait time? Maintenance condition? Personal safety? Accessibility? | x |
| E | Configuration and use of school outdoor space | Playgrounds, outdoor spaces. Proximity to emissions sources, particularly where children are exposed for longer durations. Where do children spend time outside, during breaks, PE, queuing, off-site? Differ by age groups? | x |
| F | Other pedestrian waiting spaces | i.e. outside the school gates, other areas children/parents wait | x |
| G | Traffic volumes, flow and composition | HGVs? LGVs? Taxis? ULEVs? Nature of flow – speed, stop-start? | x |
| H | Congested junctions | Congested - resulting in queuing vehicles, stop-start traffic and additional emissions? | x |
| I | Road widths, speed limit and traffic calming measures | Conducive to speeding, long crossing distances? Hostile/ unsafe? | x |
| J | Pick-up/ drop off activity | Drop off location/ activity | x |
| K | Idling activity | Where do vehicles idle, type, approx age, time, duration | x |
| L | Road safety | Illegal or undesirable manoeuvring, pedestrian accident data | x |
| M | Road access restrictions | Pedestrian Zones? No Motor Vehicles? Time based access restrictions? | x |
| N | School Keep Clear hatching | Where? Observed/ enforced? | x |
| O | Waiting /Loading restrictions | Single, double yellow lines? Kerb blips? Signage | x |
| P | Enforcement | How well are restrictions obeyed/ enforced? | x |
| Q | Bus stops/ Coach stops | Where do vehicles stop, type, approx age, time, duration? Which are used by children, where do children wait? | x |
| R | Delivery/ Servicing/ waste collection activity | Delivery to school or other site? Vehicle types, routing, timings, goods, locations | x |
| S | School Visitor parking | Where, how many, vehicle mix, active during visit | x |
| T | School Staff parking | Where, how many, vehicle mix, active during visit | x |
| U | School Vehicles (i.e. Minibus) | Where, how many, vehicle mix, active during visit | x |
| V | Other Parking | Nearby Resident/ P+D/ Business. Parking On-street/ off-street? Utilisation? Activity? | x |
| W | On-street parking restrictions | Resident Permit holder only? Business Permit holder? P+D? Unrestricted? | x |
| X | Key nearby attractors/ traffic generators | i.e. employment, supermarkets, shops, stations | x |
| Y | Cycling environment quality | Cycle parking? Evidence of demand? Cycle friendly/hostile? Cycle routes? | x |
| Z | Extent of Trees/ Shrubs/ Green barriers | Presence of planting and screening from roads | x |
| * | Emissions from on-site/ off-site energy generating plant | Gas-fired boilers and CHP Units | x |
| + | Localised industrial sources | Look out for additional part B sources not mapped – i.e. Dry cleaners, takeaway's etc. Car garages – painting cars | x |
| ! | Construction activity | Are there any construction sites? Construction traffic routing? Visible dust? Visible dust suppression/monitoring in place? | x |
| # | Street canyons | Where building height on both sides of the road is greater than road width | x |


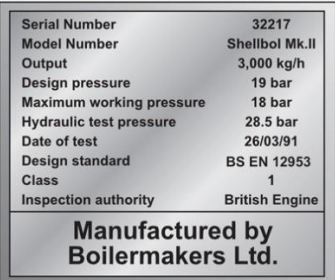
SCHOOL BUILDING AUDIT CHECKLIST




Mark on plant room (i.e. Boiler Room).

| Internal Layout | |
|--|---|
| Layout of building – class rooms and other rooms and exposure to emissions sources | Mark onto map – classrooms/assembly hall/staff room i.e. you could have store rooms or staff offices nearer the roads rather than classrooms. Class room windows fronting onto main road? |

| Heating | |
|--------------------------------------|--|
| Heat source type | e.g. gas boiler, heat pump, biomass boiler (wood fired, pellet fired, bio-diesel). Back up diesel generator? |
| Number | e.g. 3 |
| Heating only or heating & hot water? | |
| Central or Distributed | i.e. single plant room or smaller local boilers |
| If central, common flue | i.e. do all the boilers run into a single large flue, or multiple small flues |

| | |
|--|--|
| <p>Height of flue?</p>  | <p>Take a picture</p> <p>Short - <1m (i.e. similar to domestic boiler length of flue) Medium – 1m to 2m (small to medium commercial boiler size of flue) Tall – >3m (for larger boilers)</p> |
| Boiler age | |
| Boiler manufacturer | |
| Boiler model | |
| Boiler Rating (kW output) | |
| <p>Insert picture of rating plate</p>  | <p>Take a picture – includes info on boiler age, manufacturer, model, rating.</p> |
| Boiler condition | (fair, poor, excellent etc.) |
| Supply fan? Variable speed? | (Sending air into boiler) |
| Boiler control system | Advanced (digital, PC) or manual? |
| Air Conditioning? | If so is it used – at what times of year and how frequently? |
| Local Heaters? | Standalone heaters around the school? |
| Are these used? | (e.g. in sports hall) |
| If yes, what kind? | Convection (warm air blower), radiant? |
| Fuel source | Gas or electric |
| Flue system | I.e. flue to outside building? |
| Control system | Simple, or advanced (e.g. tied to PC) |
| Maintenance Regularity | |

| Ventilation | |
|--|---|
| Form | i.e. centralised (air handling units), passive (windows) |
| If windows then | Do any of the classroom windows which are regularly opened for ventilation or cooling purposes, front onto pollution sources (i.e. main roads)? |
| If centralised system then | i.e. air handling units? |
| Air Handling Units  <p>An air handling unit; air flow is from the right to left in this case. Some AHU components shown are</p> <ul style="list-style-type: none"> 1 – Supply duct 2 – Fan compartment 3 – Vibration isolator ("flex joint") 4 – Heating and/or cooling coil 5 – Filter compartment 6 – Mixed (recirculated + outside) air duct | Single or multiple? |
| Fed from boiler or direct fired? | |
| Filters in place and changed regularly | should have bag and screen filters, changed at least every 6 months or on pressure difference |
| Air intake location | roof level? |
| Air intake suitable | clear of other vents, heat sources, extract outputs? |
| General condition of system | appears in good condition, average, dilapidated? |
| Extract from classrooms? | |
| Recirculation of extract air? | If so how much. |

| | |
|----------------------------------|---|
| Control system | manual, PC (i.e. building management system) |
| Variable speed supply & extract? | Speed control on internal CO2 basis or temperature? |

| | |
|-----------------------------------|---|
| Hot Water | |
| Same as above or separate system? | |
| If separate: | |
| Gas or electric? | |
| Central or local? | i.e. one large central system or lots of small local water heaters |
| Control system? | i.e. timer, thermostat? |
| Well insulated? | must be greater than 25mm, ideally around 50mm on tank and pipework |

| | |
|--------------------------|---|
| Kitchen | |
| Extract system in place? | most likely extract from e.g. hobs |
| Extracts to... | Should exit to roof |
| Filtered? | Should have local filters for great if above hobs |
| Control System | Always on? On timed control? |

| | |
|-------------------------------|---|
| Internal Conditions | |
| Incidence of overheating | Occasional/regular/severe + temperature |
| Fresh Air | Does it feel "stuffy"? Need more fresh air? |
| Green plants within building? | If so, where? |
| Damp or mould present? | If so, where and to what extent? |

| |
|-----------------|
| Comments |
| |

STAKEHOLDER DISCUSSION POINTS:

- 1) Is there anything you would like to add or comment on regarding our recorded observations? Where do children spend time outside, during breaks, PE, queuing, off-site? Differ by age groups?
- 2) Any comments on recent trends/ issues regarding travel to school? Travel patterns of children and parents etc.
- 3) What do you feel are likely to be key sources of emissions in and around the school?
- 4) Where do you feel exposure to poor air quality is greatest in and around to school?
- 5) Key initiatives already underway to promote sustainable travel and reduce emissions? Which have worked well? Which haven't?
- 6) What more could the school do to lessen incidents of exposure and reduce sources of emissions?
- 7) Based on the toolkit of measures, and the findings of the observations and analysis, what are the top 3 measures you would prioritise for the school?
- 8) What sources of funding do you feel may be available to contribute towards localised schemes to address poor air quality at the school?
- 9) Is there any planned growth at the school (in terms of number of pupils or the school building/ grounds)?
- 10) Are there any notable committed developments planned in the local area?
- 11) To what extent do you feel issues relating air quality are well understood by the children, parents, teachers, local community, borough officers and decision makers?
- 12) Are you aware of the air quality related lesson materials available?
- 13) Any other activities or behaviours not observed today you would wish to highlight?
- 14) Can you provide us with a copy of the deliveries log for the week of the audit?

STAKEHOLDER FEEDBACK NOTES:

Appendix C – Engagement Material

Supporting material for Air Quality related lessons

Bespoke material for each school is provided to add value to lessons with a focus on air quality and the environment, including:

- Map of air pollution at the school;
- Pie charts summarising the type of traffic near the school and how much air pollution is produced by which vehicles.

For example, this information could be used in conjunction with LSx Part 2: Investigating Air Quality whereby the objectives are listed as:

- Collecting scientific evidence
- Carrying out fieldwork investigations
- Making a labelled field sketch

The bespoke air quality modelling outputs for each school can add value to the lesson plan by being used to summarise the 'baseline' conditions prior to any measures being implemented and to identifying areas to target fieldwork investigations.

The pie charts illustrating the type of traffic near the school and how much air pollution is produced by which vehicles can contribute towards LSx Part 4: Action Planning whereby pupils learn about:

- How decisions and actions can affect the quality of people's lives
- Different ways in which people can improve their environment
- How to present a persuasive argument
- To make real choices and decisions

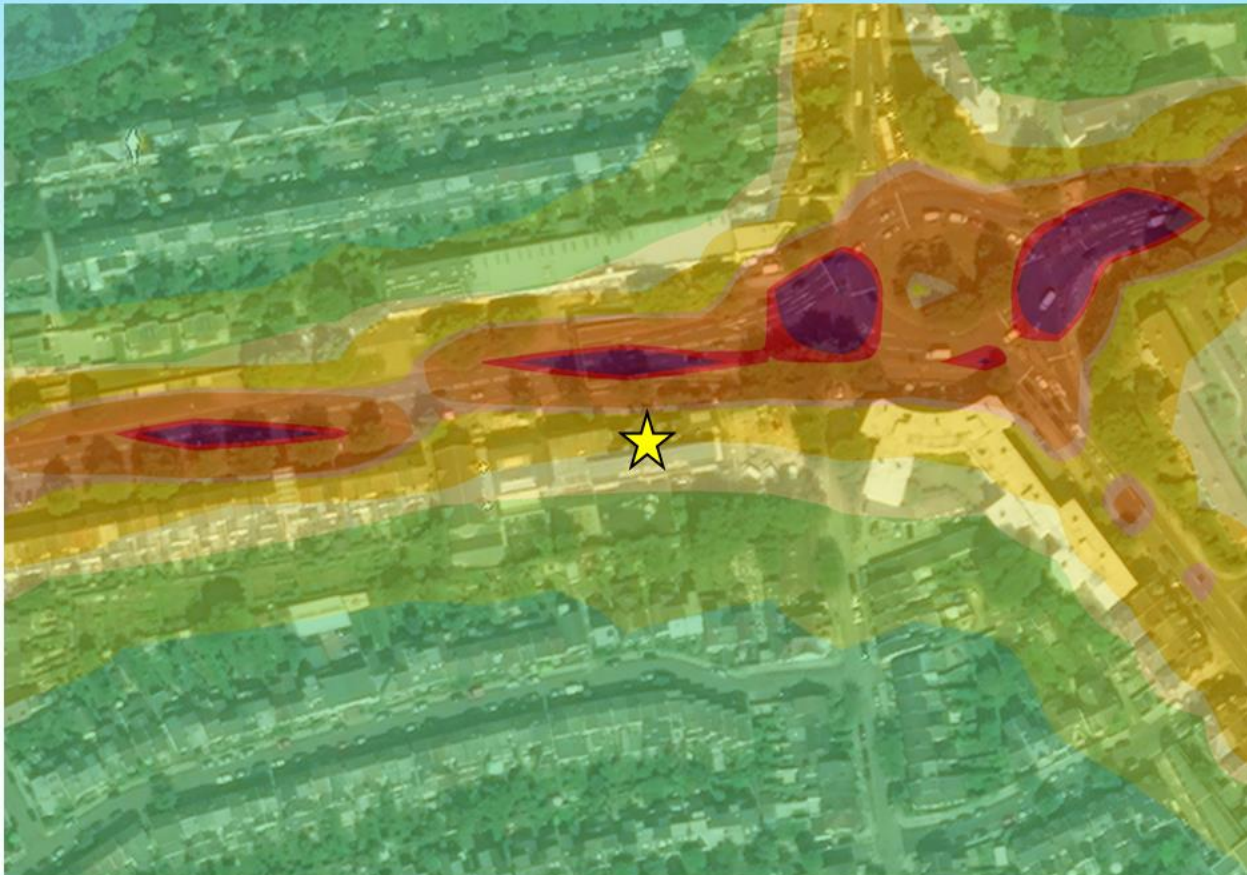
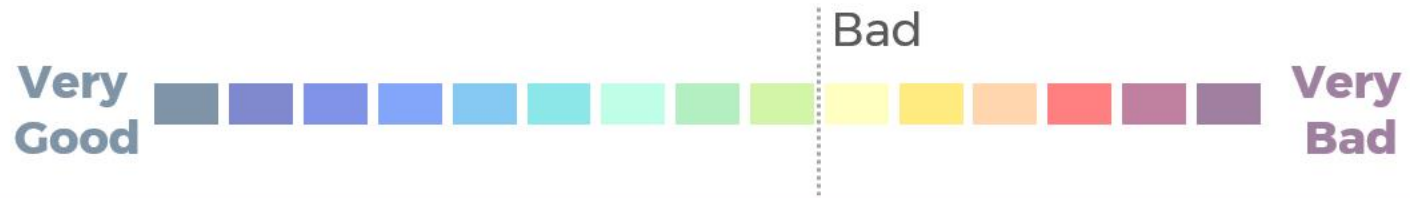
An understanding of how you travel to / from school (as well as other non-school related journeys) and the impacts it has on air quality can provide them with knowledge to travel via active means i.e. walking, scooting and cycling where possible.

The above can be linked to the National Curriculum, namely Science, Geography, PSHE / Citizenship and English Speaking and Listening. It is recommended that these lessons / materials are delivered by teaching staff as part of wider initiatives, such as National Clean Air Day.

Relevant Links:

- LSx: <http://www.lsx.org.uk/get-involved/schools/>
- National Clean Air Day: <https://www.cleanairday.org.uk/>
- London Curriculum: <https://www.anewdirection.org.uk/what-we-do/london-curriculum>

St Stephen's Church of England Primary School



St Stephen's Church of England Primary School

Chart 1 - Traffic near the school

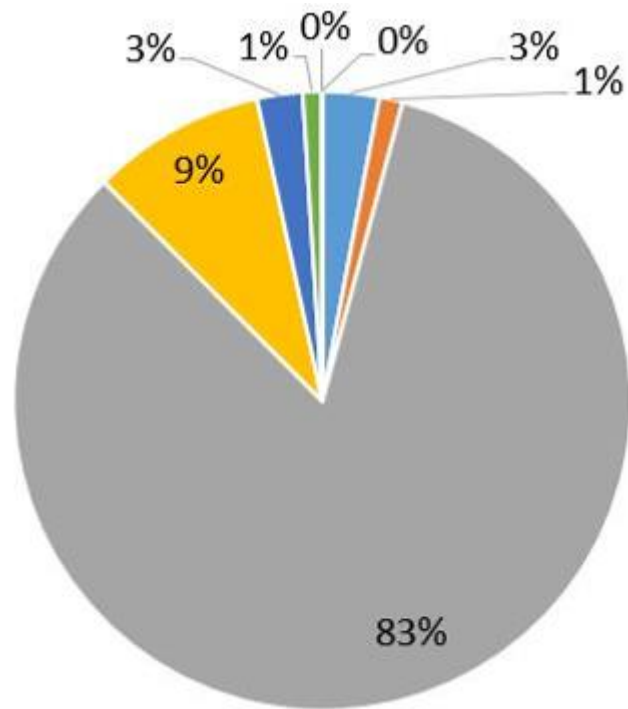
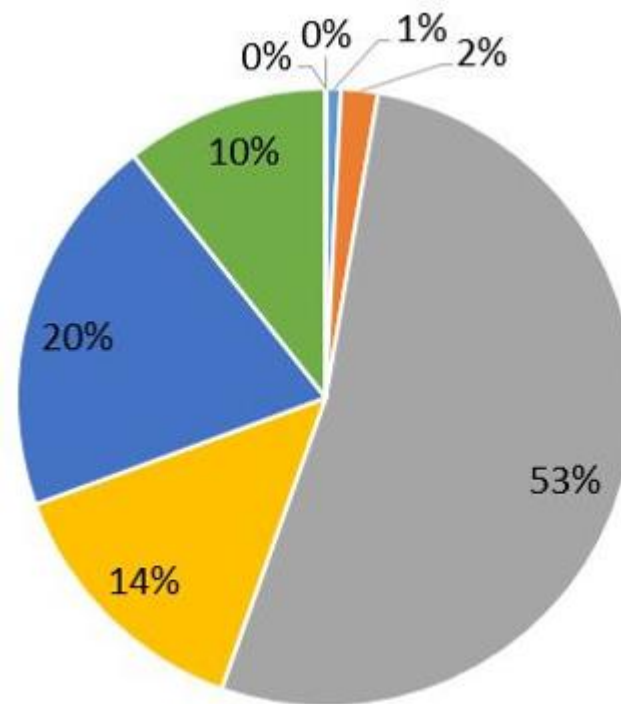


Chart 2 - Air pollution by traffic near the school



Key

- Motorcycle
- Taxi
- Car
- Vans
- Lorries
- Buses & Coaches
- Electric Car
- Electric LGV

Contact x@london.gov.uk to receive the accompanying PowerPoint slides for your school.



Introduction to air pollution (20-30 minutes)

- Interactive presentation highlighting the issue of poor air quality, the causes, the impacts, and the types of measures that can have a positive impact on reducing poor air quality.
- Suitable for KS1 and KS2, with supplementary points for KS2.
- Use the discussion questions on each slide to encourage the children to volunteer their own ideas.
- Then reveal the answers, see if they got them all, and explain any they may have missed.



KS1/KS2

- It can be hard to describe can't it?
- It is made up of fumes (gas or smoke) and dust in the air.
- Sometimes you can see it or smell it.
- They are made up of gases, and tiny particles too small to see with the human eye.

KS2

- Nitrogen Dioxide (fumes/ gases)
- 'Particulate matter' or PM. The two main types are PM₁₀ and PM_{2.5}.
- Really small particles – you could fit 40 PM_{2.5} particles across the width of a human hair.

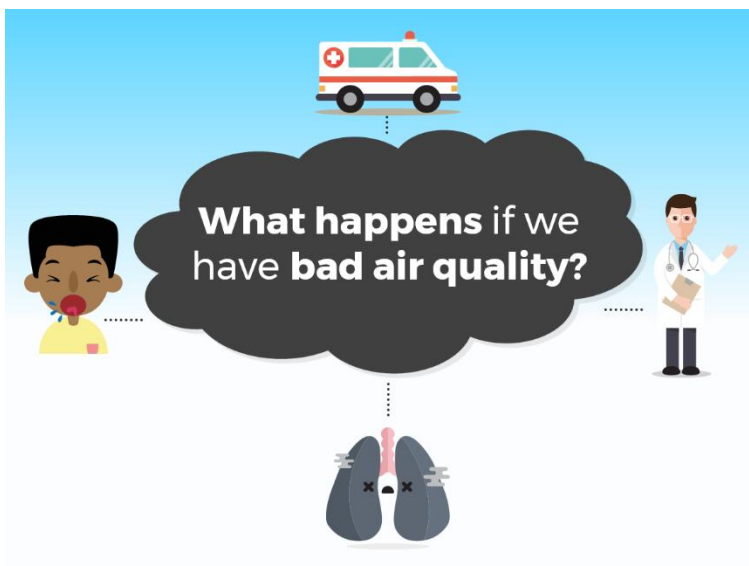


KS1/ KS2

- Factories
- Power stations
- Boilers heating houses, businesses, the school
- Chemicals from cleaning products etc.
- Transport produces a lot of pollution:
 - Cars, Taxis,
 - Lorries, Buses
- Large vehicles like lorries and buses cause a lot of pollution.

KS2

- Diesel vehicles are bad as they produce more Nitrogen Dioxide and Particulate matter'.
- Lorries, buses, and vans and taxis are often diesels.

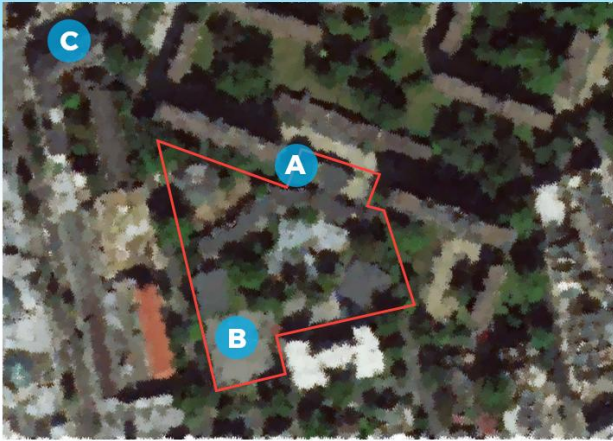


KS1/ KS2

- Cough
 - Breathing difficulties
 - Asthma – makes it harder for people with asthma to breath
 - Makes us ill
 - May need to see the doctor or go to hospital
-
- So it's a real problem we need to something about.

MAYOR OF LONDON

Where do you think you are most exposed to poor air quality?



KS1/ KS2

- Can anyone tell me what this image is?
- It's our school – point out features like the playground and main roads to get bearings.
- Based on what we've talked about, and what the causes of air pollution are, which place do you think is most polluted by show of?
 - A
 - B
 - C

KS1/ KS2

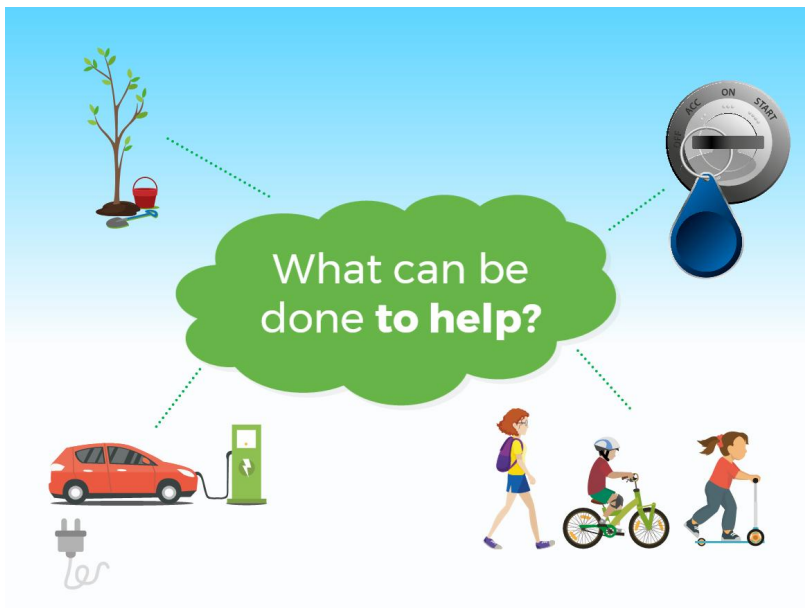
- Explain the bar along the top shows that areas in blue or green are good, areas in yellows/orange/red/purple are more polluted
- Well done to everyone who got it right
- Explain it's because all the traffic on the main roads is a major source of the pollution

How do you travel to school?



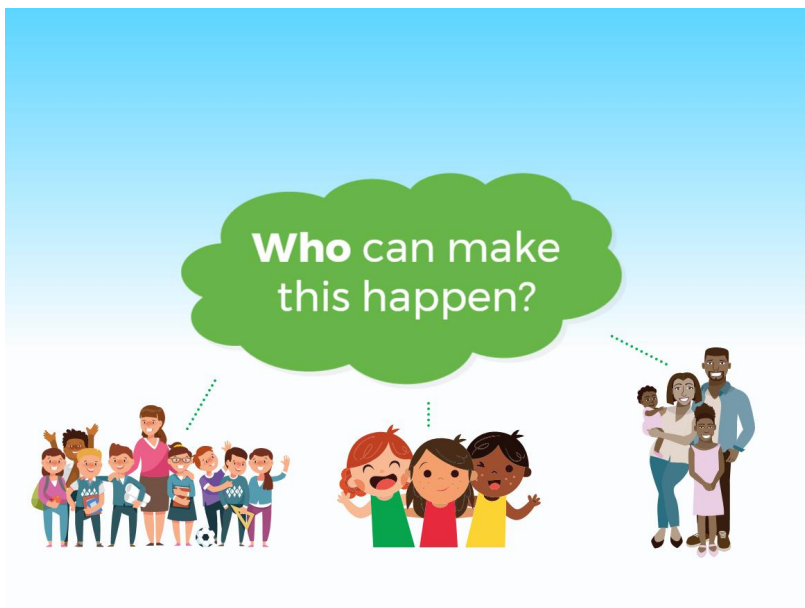
KS1/ KS2

- We've seen what a big part transport plays in air pollution, so let's think about how we travel to school
- Show of hands
- Which is best in terms of air pollution?
- Why?



KS1/ KS2

- Key in the ignition = stopping engine idling (where people leave the engine running when parked).
- More travel by walking, scooting, cycling ...or public transport
- Though we know some people may need to travel by car
- Electric cars
- Planting trees to capture and absorb some pollution (particulates)



KS1/ KS2

- Themselves
- Class mates
- Teachers
- Family
- Wider community
- The Council
- The Mayor
- Transport for London
- The Government
-everyone has a part to play

MAYOR OF LONDON

Appendix D – Toolkit of Measures to Improve Air Quality at Schools

The Mayor of London's School Air Quality Audits

Toolkit of Measures to Improve Air Quality at Schools

May 2018



MAYOR OF LONDON

Summary of Measures

| 1. HIGHWAY MEASURES | |
|---------------------|---|
| A | Anti-idling |
| A1 | Fines |
| A2 | Campaigns, including driver engagement |
| A3 | Information signage |
| B | Reducing traffic flow |
| B1 | 'School Streets' |
| B2 | Collapsible bollards |
| B3 | 'Play Streets' (<i>temporary measure</i>) |
| B4 | Road closure |
| B5 | Filtered permeability |
| B6 | One-way streets/ No entry restrictions |
| B7 | ULEV-only streets |
| B8 | Width restriction (e.g. 7ft) |
| B9 | Environmental weight limit signs |
| B10 | Reallocate roadspace |
| B11 | Weight restrictions |
| C | Smoothing traffic flow/speed |
| C1 | Modify traffic calming |
| C2 | Optimise traffic signals |
| C3 | Junction improvements |
| D | Reducing drop-off activity |
| D1 | Public Space Protection Orders |
| D2 | School Keep Clear markings |
| D3 | Double/single yellow lines |
| D4 | Improve enforcement of restrictions |
| E | Improved pedestrian and cyclist environment |
| E1 | Improved pedestrian environment - footway widening, kerb build-outs |
| E2 | Improved crossing facilities on desire lines |
| E3 | Traffic calming |
| E4 | Improve Visibility of the School |
| E5 | Cycle hangers |
| F | Promote a switch to low emission vehicles |
| F1 | Ultra-low Emission Zone (ULEZ) & Low Emission Zone (LEZ) |
| F2 | Comprehensive charging provision for ULEVs |

| | |
|----------|---|
| G | Parking/loading |
| G1 | Identify a Park & Stride site |
| G2 | Remove or relocate parking/ loading bays and/or amend restrictions |
| G3 | Introduce kerb blip loading restrictions |
| G4 | Enforce parking restrictions |
| G5 | Additional parking charges for more polluting vehicles |
| G6 | Introduce or amend CPZ restrictions around school to restrict non-residents parking |
| G7 | Parking rationalisations with ULEV car clubs |
| H | Buses |
| H1 | Bus stop relocation |
| H2 | Low emission buses |
| I | Freight and Deliveries |
| I1 | Engage with local businesses to reduce freight/ delivery emissions |
| I2 | Promote low emission vehicles for freight and deliveries |
| I3 | Delivery Servicing Plans (DSPs) for new developments |
| I4 | Re-time Borough commercial waste collection |
| J | Construction |
| J1 | Planning conditions to reduce impacts of freight traffic |
| J2 | Managing the impact of dust and emissions during construction and demolition |
| J3 | Retrospective discussions with already permitted developments to lessen the impacts |
| J4 | Non-Road Mobile Machinery Audit |
| K | Planning Policy and Strategy |
| K1 | Healthy Streets approach, sustainable transport and roadspace reallocation from vehicular traffic |
| L | Green Infrastructure |
| L1 | Green screens |
| L2 | Trees, shrubs, planters |
| L3 | Green Gateways |
| L4 | Pocket parks |

| 2. SCHOOL SITE MEASURES | |
|-------------------------|--|
| M | School Grounds |
| M1 | Additional scooter/ cycle parking |
| M2 | Staff car parking |
| M3 | Anti-idling for deliveries |
| M4 | Re-timing for deliveries |
| M5 | Reduce number of deliveries, staff/visitor vehicle trips and/or use more sustainable modes |
| M6 | Relocate pedestrian entrances |
| M7 | Green screens |
| M8 | Trees/ shrubs/ planters |
| M9 | Green spaces |
| M10 | Pupil & staff cycle parking |
| M11 | Reduced waiting times to enter school grounds |
| M12 | Relocate playgrounds and free flow spaces |
| M13 | Co-ordinate start/ finish times with nearby schools |
| M14 | Reconsider playground layouts to reduce exposure |
| M15 | Sheltered waiting areas for parents/ guardians |
| School Building | |
| N | School boilers/ heating |
| N1 | Upgrade aging boilers |
| N2 | Install Optimising Compensator Control System for School Boilers |
| N3 | Boiler flues and extraction equipment |
| N4 | Reducing over-heating and tackling heat gain |
| N5 | Replace aging radiators |
| O | Improve product choice (e.g. cleaning products) |
| O1 | Improve product choice (e.g. cleaning products) |
| P | Regular service & maintenance of appliances and equipment |
| P1 | Regular service & maintenance of appliances and equipment |
| Q | Improve school building insulation |
| Q1 | Improve school building insulation |
| Q2 | Upgrade windows |
| Q3 | Replace temporary classrooms with permanent structures |
| Q4 | Green Roofs |
| S | Ventilation / Air Filtration |
| S1 | Installation of Air Conditioning Units |
| S2 | Introduce Air Filtration Systems |
| S3 | Install HEPA Filters in Air Handling Units |
| S4 | Other air filtration systems - air purifiers |
| S | Other |
| S1 | Air quality monitoring and information provision eco-monitors and walking route maps. |

| 3. BEHAVIOURAL MEASURES | |
|-------------------------|---|
| T1 | Attain improved STARS accreditation status, ultimately Gold status. |
| T2 | Promote cleaner walking routes to school |
| T3 | Promoting Park & Stride |
| T4 | Promoting car sharing |
| T5 | Walking Route Maps / Leaflets |
| T6 | Parent and Public Workshops |
| T7 | Prepare 'Welcome Packs' for new pupils / parents |
| T8 | Deliver Air Quality focused lesson/s to children |
| T9 | Awareness raising session amongst staff |
| T10 | Daily monitoring of London Air website/ app |
| T11 | Add Air Quality to Junior Citizenship Scheme |
| T12 | Anti-idling campaign |
| T13 | Attain an improved Award in Healthy Schools London, ultimately a Gold Award |
| T14 | Awareness raising events amongst the wider community |
| T15 | Cycle training and promotional initiatives |
| T16 | Gamification to promote active travel |
| T17 | Restrict or reduce personal deliveries |
| T18 | CPD supporting teachers subject knowledge on air quality |
| T19 | Walking Buses |

| 4. WIDER MEASURES | |
|-------------------|--|
| U1 | Targeted scrappage scheme for polluting vehicles entering London |
| U2 | Reform Vehicle Excise Duty |
| U3 | Promote a transition to electric heating and heat pumps |
| U4 | Reform Buildings Regulations to promote heat pumps |
| U5 | Zero emission zones |

Summary of Measures, including Assessment Criteria

Highway Measures

| 1. HIGHWAY MEASURES (Key Stakeholder: Borough/ TfL) | | | | | | | | | | | | | | | | | | | | |
|---|---|---|---|---|---|-----|---|---|---|---|---|---|--|--|--|--|--|--|---|---|
| I | Freight and Deliveries | | | | | | | | | | | | | | | | | | | |
| I1 | Engage with local businesses to reduce freight/ delivery emissions | X | | M | L | M | L | X | | | | | | | | | | | | Y |
| I2 | Promote low emission vehicles for freight and deliveries | X | | M | L | M | L | | X | | | | | | | | | | | Y |
| I3 | Delivery Servicing Plans (DSPs) for new developments | X | | L | L | M | L | | | | | | | | | | | | | Y |
| I4 | Re-time Borough commercial waste collection | X | | L | M | M | M | | | | | | | | | | | | | Y |
| J | Construction | | | | | | | | | | | | | | | | | | | |
| J1 | Planning conditions to reduce impacts of freight traffic | X | | M | L | M | L | | X | | | | | | | | | | | Y |
| J2 | Managing the impact of dust and emissions during construction and demolition | X | X | L | L | S | M | | | | | | | | | | | | X | Y |
| J3 | Retrospective discussions with already permitted developments to lessen the impacts | X | | M | L | L | L | | X | | | | | | | | | | | Y |
| J4 | Non-Road Mobile Machinery Audit | X | | L | L | S | M | | | | | X | | | | | | | | |
| K | Planning Policy and Strategy | | | | | | | | | | | | | | | | | | | |
| K1 | Healthy Streets approach, sustainable transport and roadspace reallocation from vehicular traffic | X | X | H | H | L | L | | X | | | | | | | | | | | Y |
| L | Green Infrastructure | | | | | | | | | | | | | | | | | | | |
| L1 | Green screens | | X | L | L | S | H | | | X | X | | | | | | | | | Y |
| L2 | Trees, shrubs, planters | | X | L | L | S-M | M | | | X | | | | | | | | | | Y |
| L3 | Green Gateways | | X | L | L | S | H | | | X | | | | | | | | | | Y |
| L4 | Pocket parks | | X | L | M | S-M | H | | | | | | | | | | | | | Y |

Summary of Measures, including Assessment Criteria

School Site Measures: school grounds

| 2. SCHOOL SITE MEASURES (Key Stakeholder: School/ Borough) | | | | | | | | | | | | | | | | | | | | |
|--|--|---|---|---|-----|---|---|--|---|---|---|---|---|--|--|--|---|--|---|---|
| M | School Grounds | | | | | | | | | | | | | | | | | | | |
| M1 | Additional scooter/ cycle parking | X | | L | L | S | H | | X | | | | | | | | | | X | |
| M2 | Staff car parking | X | | L | L | M | L | | X | | | | | | | | | | | |
| M3 | Anti-idling for deliveries | X | | L | L | S | H | | | | | | | | | | | | | |
| M4 | Re-timing for deliveries | X | | L | L | S | M | | X | | | | | | | | | | | |
| M5 | Reduce number of deliveries, staff/visitor vehicle trips and/or use more sustainable modes | X | | L | L | M | M | | X | | | | | | | | | | | |
| M6 | Relocate pedestrian entrances | | X | L | L | S | M | | | | | | | | | | | | | |
| M7 | Green screens | | X | L | M | M | M | | | X | X | | X | | | | | | | |
| M8 | Trees/ shrubs/ planters | | | L | L-M | M | H | | | | | | X | | | | X | | | |
| M9 | Green spaces | | X | L | L | S | H | | | | | | | | | | | | | |
| M10 | Pupil & staff cycle parking | X | | L | L | S | H | | X | | | | | | | | | | X | |
| M11 | Reduced waiting times to enter school grounds | | X | L | L | S | H | | X | | | | | | | | | | | Y |
| M12 | Relocate playgrounds and free flow spaces | | X | M | M-H | M | M | | | | X | X | | | | | | | | |
| M13 | Co-ordinate start/ finish times with nearby schools | X | X | L | L | S | L | | X | | | | | | | | | | | |
| M14 | Reconsider playground layouts to reduce exposure | | X | L | L | S | M | | | | | | | | | | | | | |
| M15 | Sheltered waiting areas for parents/ guardians | X | X | L | L | S | M | | X | | | | | | | | | | | |

Summary of Measures, including Assessment Criteria

School Site Measures: school building

| 2. SCHOOL SITE MEASURES (Key Stakeholder: School/ Borough) | | | | | | | | | | | | | | | | | | | | |
|--|---|---|---|---|-----|-----|-----|--|--|---|--|--|---|---|---|---|--|---|---|--|
| School Building | | | | | | | | | | | | | | | | | | | | |
| N | School boilers/ heating | | | | | | | | | | | | | | | | | | | |
| N1 | Upgrade aging boilers | X | | L | L-H | S-M | M-H | | | | | | | | | | | X | | |
| N2 | Install Optimising Compensator Control System for School Boilers | X | | L | L | S | H | | | | | | | | | | | X | | |
| N3 | Boiler flues and extraction equipment | | X | L | L | S | M | | | | | | | | | | | | | |
| N4 | Reducing over-heating and tackling heat gain | X | | L | L-M | S | H | | | | | | | | | | | X | X | |
| N5 | Replace aging radiators | X | | L | M | S-M | M | | | | | | | | | | | X | X | |
| O | Improve product choice (e.g. cleaning products) | | | | | | | | | | | | | | | | | | | |
| O1 | Improve product choice (e.g. cleaning products) | X | X | L | L | S | H | | | | | | | | | | | | | |
| P | Regular service & maintenance of appliances and equipment | | | | | | | | | | | | | | | | | | | |
| P1 | Regular service & maintenance of appliances and equipment | X | | L | L | S | H | | | | | | | | | | | | | |
| Q | Improve school building insulation | | | | | | | | | | | | | | | | | | | |
| Q1 | Improve school building insulation | X | | L | L-M | S-M | M-H | | | | | | X | X | X | | | | | |
| Q2 | Upgrade windows | | X | L | L-H | S-M | M-H | | | | | | X | X | X | | | | | |
| Q3 | Replace temporary classrooms with permanent structures | X | | L | H | M-L | M | | | | | | | | X | X | | | | |
| Q4 | Green Roofs | | X | L | M | M | M | | | X | | | X | | | | | | | |
| S | Ventilation / Air Filtration | | | | | | | | | | | | | | | | | | | |
| S1 | Installation of Air Conditioning Units | | X | L | L-H | S-M | M-H | | | | | | | | | | | X | | |
| S2 | Introduce Air Filtration Systems | | X | L | M | M | M | | | | | | | | | | | X | | |
| S3 | Install HEPA Filters in Air Handling Units | | X | L | L | S-M | M | | | | | | | | | | | X | | |
| S4 | Other air filtration systems - air purifiers | | X | L | L-M | S-M | M | | | | | | | | | | | X | | |
| S | Other | | | | | | | | | | | | | | | | | | | |
| S1 | Air quality monitoring and information provision eco-monitors and walking route maps. | X | X | L | L | S | H | | | | | | | | | | | | X | |

Summary of Measures, including Assessment Criteria

Behavioural Measures

| 3. BEHAVIOURAL MEASURES (Key Stakeholder: School/ Borough) | | | | | | | | | | | | | | | | | | | | | |
|--|---|---|---|---|-----|-----|---|---|---|--|--|--|---|--|--|---|---|--|--|--|---|
| T1 | Attain improved STARS accreditation status, ultimately Gold status. | X | | L | L | S-M | H | | | | | | | | | X | | | | | |
| T2 | Promote cleaner walking routes to school | X | X | L | L | S | H | | X | | | | | | | X | X | | | | |
| T3 | Promoting Park & Stride | X | | L | L | S-M | H | | X | | | | | | | X | X | | | | |
| T4 | Promoting car sharing | X | | L | L | S | H | | X | | | | | | | | X | | | | |
| T5 | Walking Route Maps / Leaflets | | X | L | L | S | H | | X | | | | | | | X | X | | | | |
| T6 | Parent and Public Workshops | X | X | L | L | S | H | | | | | | | | | X | X | | | | Y |
| T7 | Prepare 'Welcome Packs' for new pupils / parents | X | X | L | L | S | H | X | X | | | | | | | X | X | | | | Y |
| T8 | Deliver Air Quality focused lesson/s to children | X | X | L | L | S | H | | | | | | | | | X | X | | | | Y |
| T9 | Awareness raising session amongst staff | X | X | L | L | S | H | | | | | | | | | X | | | | | |
| T10 | Daily monitoring of London Air website/ app | X | X | L | L | S | H | | | | | | X | | | X | | | | | |
| T11 | Add Air Quality to Junior Citizenship Scheme | X | X | L | L | S | H | | | | | | | | | X | | | | | |
| T12 | Anti-idling campaign | X | | L | L | S | H | | | | | | | | | X | X | | | | |
| T13 | Attain an improved Award in Healthy Schools London, ultimately a Gold Award | X | X | L | L | S-M | H | | | | | | | | | X | X | | | | |
| T14 | Awareness raising events amongst the wider community | X | X | L | L | S-M | M | | | | | | | | | X | | | | | |
| T15 | Cycle training and promotional initiatives | X | | L | L | S | M | X | X | | | | | | | | X | | | | |
| T16 | Gamification to promote active travel | X | | L | L-M | M | M | | X | | | | | | | | X | | | | |
| T17 | Restrict or reduce personal deliveries | X | | L | L | S | M | | | | | | | | | | | | | | |
| T18 | CPD supporting teachers subject knowledge on air quality | X | X | L | L | S-M | M | | | | | | | | | X | X | | | | |
| T19 | Walking Buses | X | | L | L | S | M | | X | | | | | | | X | X | | | | |

Wider Measures

| 4. WIDER MEASURES (Key Stakeholder: Borough/ TfL/ GLA/ Central Government) | | | | | | | | | | | | | | | | | | | | | |
|--|--|---|---|---|---|---|---|--|--|--|--|--|--|--|--|--|--|--|--|--|--|
| V1 | Targeted scrappage scheme for polluting vehicles entering London | X | | H | H | L | L | | | | | | | | | | | | | | |
| V2 | Reform Vehicle Excise Duty | X | | H | M | L | L | | | | | | | | | | | | | | |
| V3 | Promote a transition to electric heating and heat pumps | X | | H | M | L | L | | | | | | | | | | | | | | |
| V4 | Reform Buildings Regulations to promote heat pumps | X | | M | M | L | L | | | | | | | | | | | | | | |
| V5 | Zero emission zones | X | X | H | H | L | L | | | | | | | | | | | | | | |

Other formats and languages

For a large print, Braille, disc, sign language video or audio-tape version of this document, please contact us at the address below:

Greater London Authority
City Hall
The Queen's Walk
More London
London SE1 2AA

Telephone **020 7983 4000**
www.london.gov.uk

You will need to supply your name, your postal address and state the format and title of the publication you require.

If you would like a summary of this document in your language, please phone the number or contact us at the address above.