

Appendix C: Using maps and data

1. The London 10 Minute Walk Map

The Grow Back Greener Fund seeks to prioritise projects in areas that have poor existing access to green space. In line with the Mayor's manifesto pledge that no Londoner should live more than a 10-minute walk from green space, the GLA (with the help of Greenspace Information for Greater London, GIGL) have produced a new *London 10-Minute Walk Map* that identifies priority areas where Londoners may live more than an 800m walk from accessible green space of at least 0.02 hectares.

Please note:

- This map is a first version and may change in future as the data behind it is improved.
- Due to server issues, there may be times when the map doesn't load correctly. Please keep trying (at different times of day for example) but contact Groundwork London if the issue persists. Please email greencity@london.gov.uk, or call Kamrul Islam on 07540 126 706 or Lewis Fieldson on 07889 756247. If you do have problems accessing the map it may help to try via another browser, to clear your browser cache (Ctrl+Shift+Delete), or to try via another device.

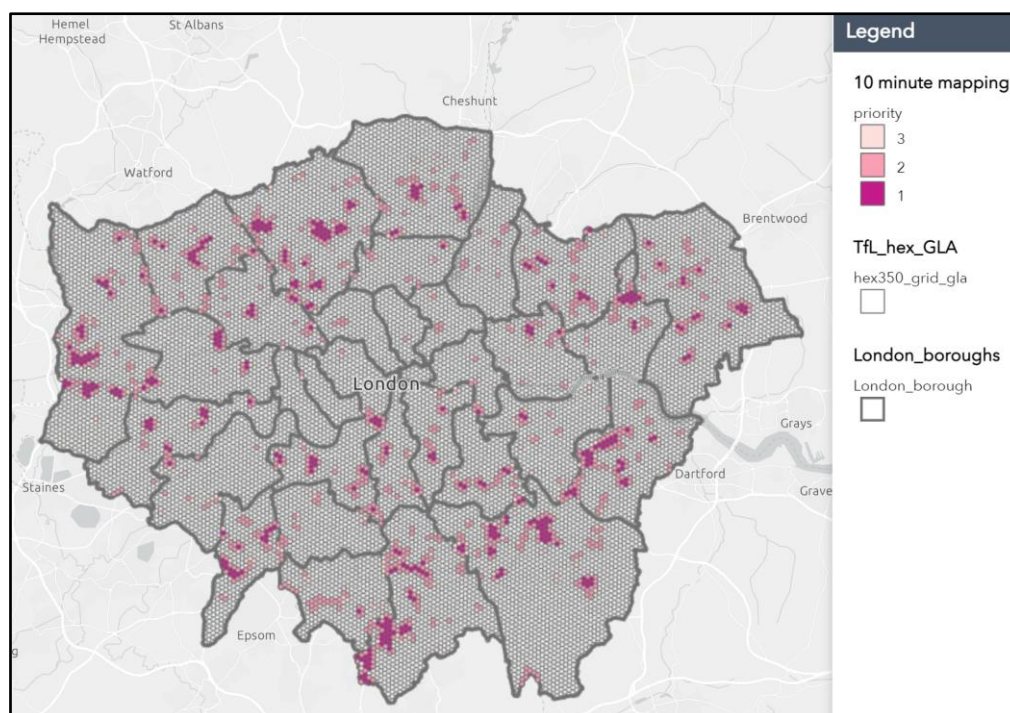
1.1 Using the London 10 Minute Walk Map

Access the London 10-Minute Walk Map here:

<https://www.london.gov.uk/what-we-do/environment/parks-green-spaces-and-biodiversity/green-infrastructure-maps-and-tools/10-minute-walk-map>

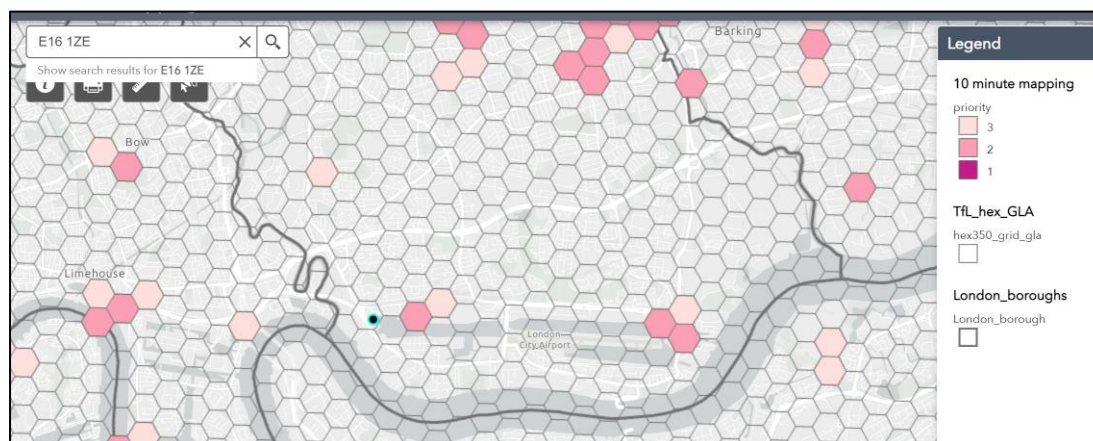
What you will see when accessing the map in its [full screen version](#) is shown below. It includes the London borough boundaries, a grid that divides the city into hexes of equal size, and the 10 Minute Walk priority layer: colour coded to show areas where Londoners are more likely to live more than an 800m walk from an accessible green space of at least 0.02 hectares.

Grow Back Greener Fund 2022: Appendix C



To identify the priority 'score' associated with your project, find the relevant location and observe which colour hex it falls within. The possible scores are 1,2,3 or 0 (if it falls within a hex that is not pink). Your project may fall within a hex that is adjacent to one of the pink hexes (with a score of 1,2 or 3). If this is the case, please refer to this in your response to Q3.2 of the application form. You can either navigate to a location by zooming within the map, or enter a postcode or address into the search box at the top-left of screen.

In the example below, the postcode E16 1ZE falls in a hex with no colour, so it's 'score' (to include in your response to Q3.2) would be 0. **Note that this does not mean your project is not eligible for the fund.** This mapping is one way of helping us identify where locations are more than a 10-minute walk from accessible green space, but you can also explain in writing (Q3.2) how your project would help improve Londoners' access to green space.



2. London Climate Risk Mapping

The climate adaptation and water theme and the tree planting theme of Grow Back Greener seeks to prioritise projects that can benefit people in areas of London with high levels of climate exposure and vulnerability. You can use our Climate Risk Maps to find out about how your area is affected by these factors. You will be asked to refer this information as part of your application.

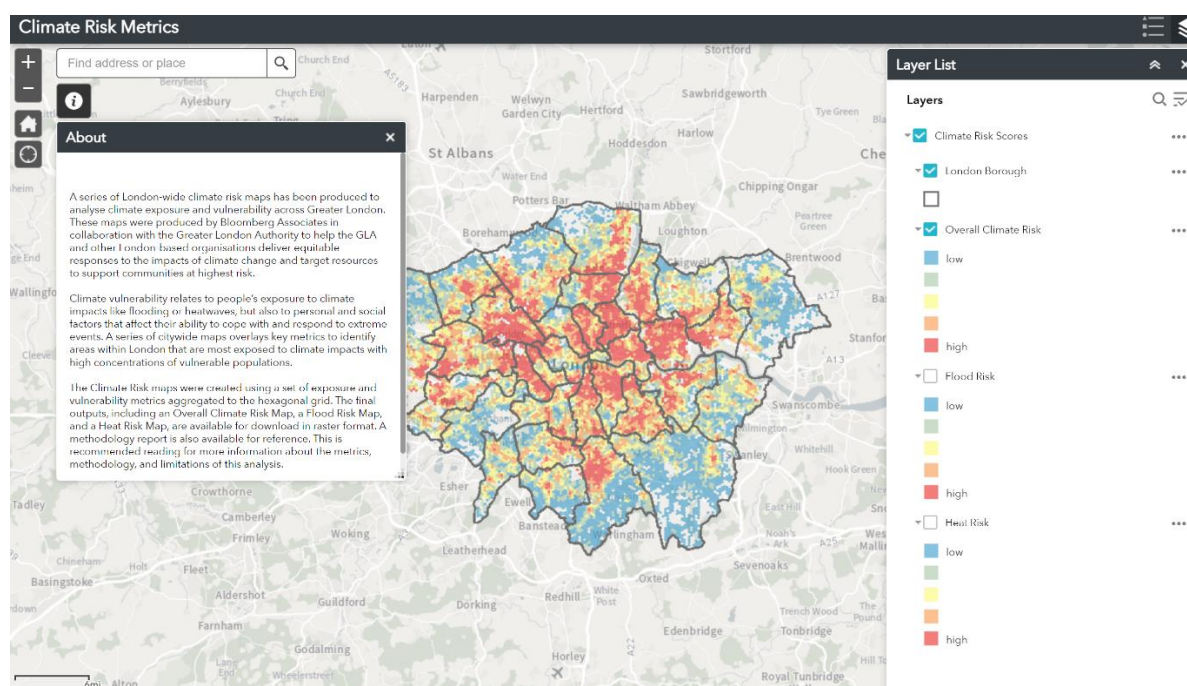
Climate vulnerability relates to people's exposure to climate impacts like flooding and heatwaves, but also to the personal and social factors that affect their ability to cope with and respond to extreme events. High climate risk coincides with areas of income and health inequalities. A series of citywide maps overlays key metrics to identify areas within London that are most exposed to climate impacts (heat and surface water flood risk) with high concentrations of vulnerable populations.

2.1. Using the Climate Risk Maps

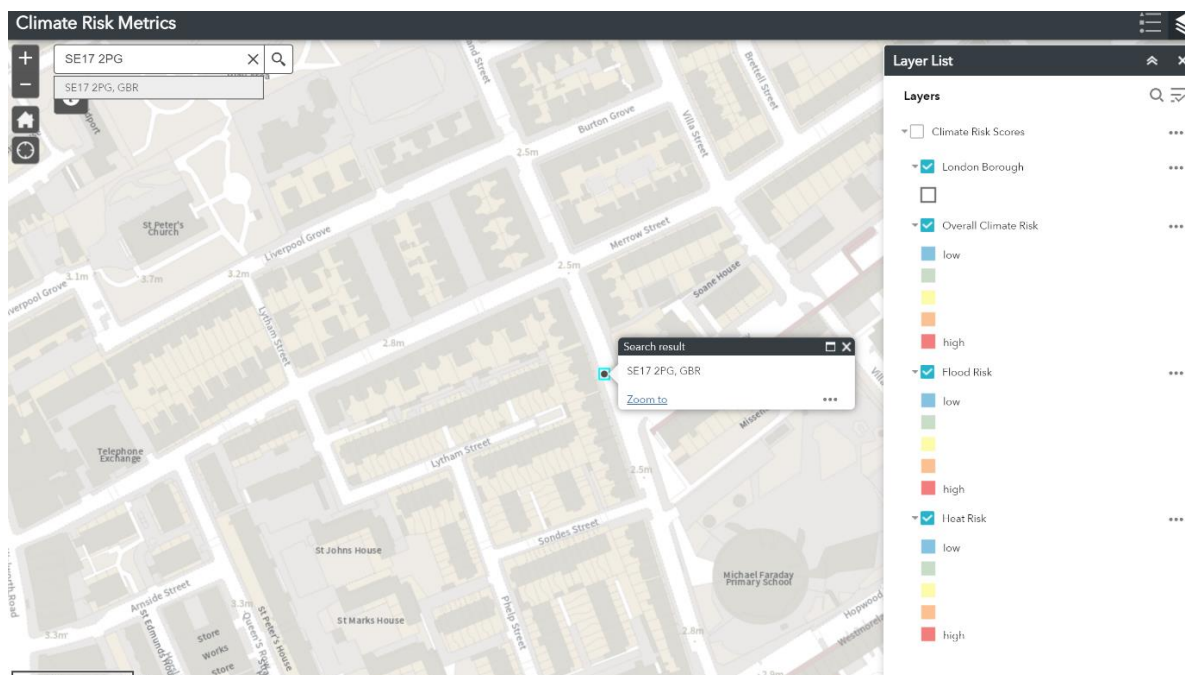
Go to the Climate Risk Maps on the London datastore:
<https://data.london.gov.uk/dataset/climate-risk-mapping>

There, you will find a link to the interactive maps and a methodology document explaining the metrics and methodology.

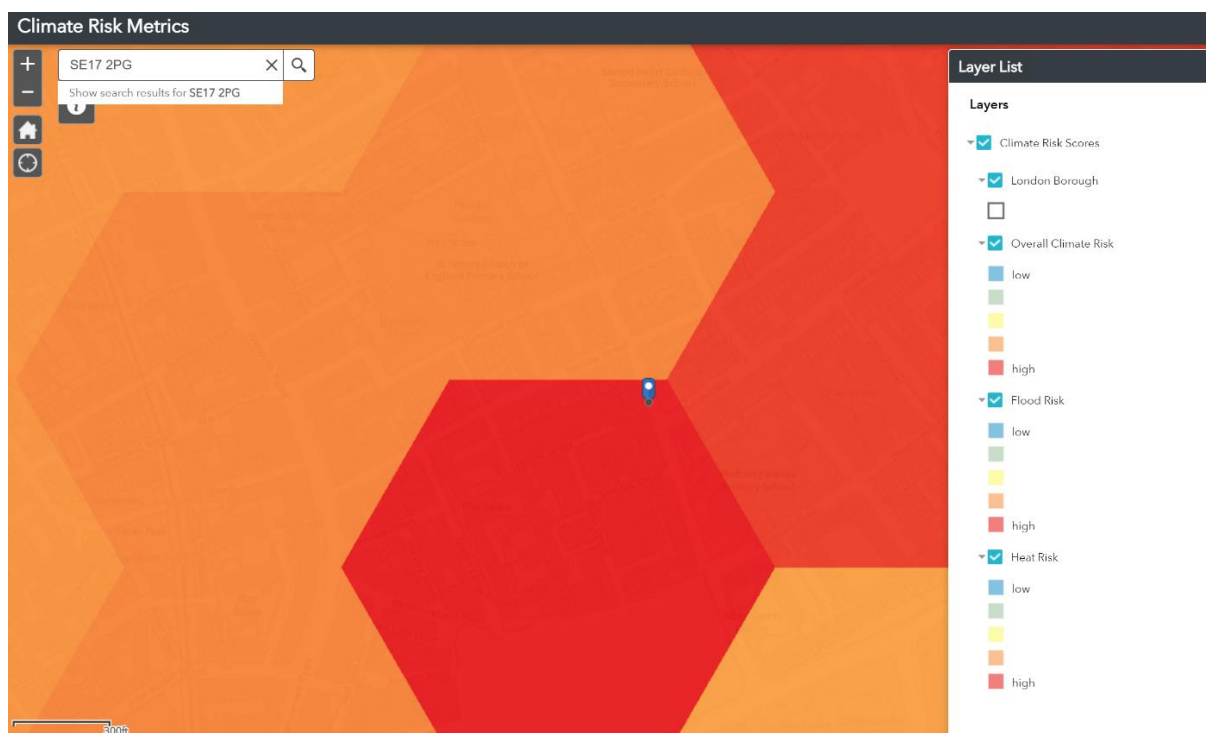
- i. Click on the interactive map. The map will show the climate risk score for each "hex" area.



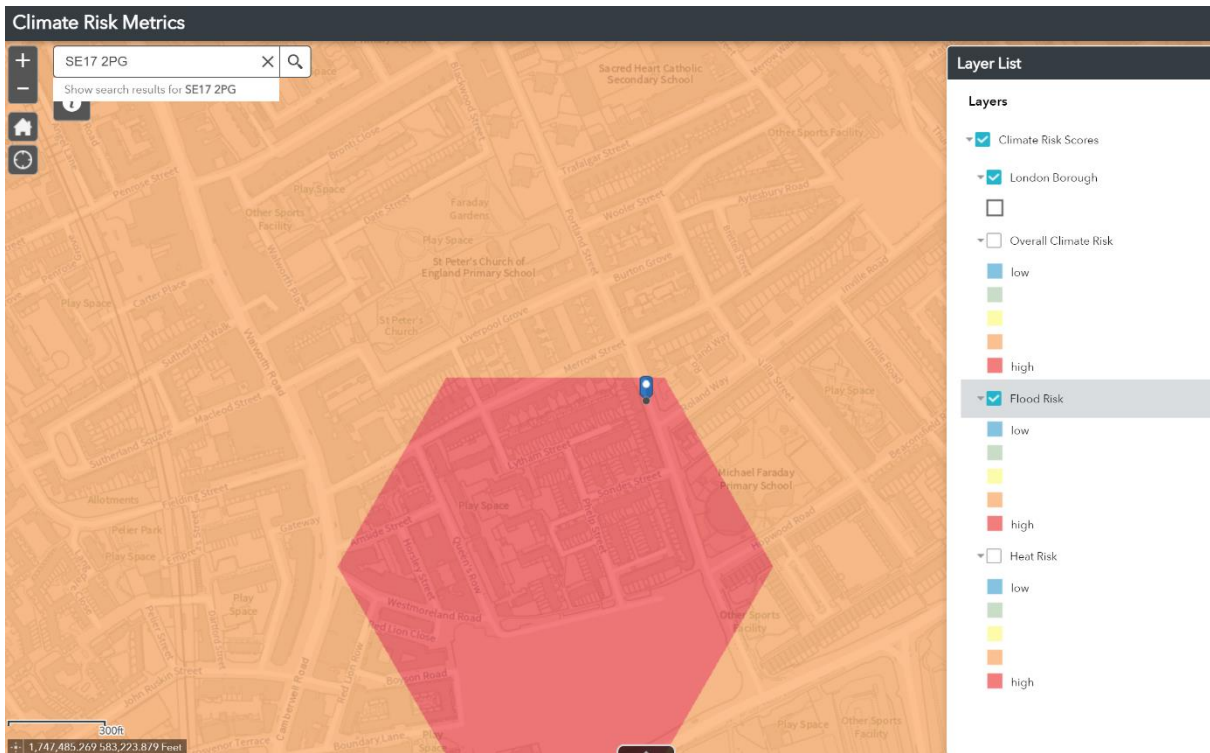
- ii. Type the postcode of your project into the search bar at the upper left of the screen and click on the search button, or hit enter.



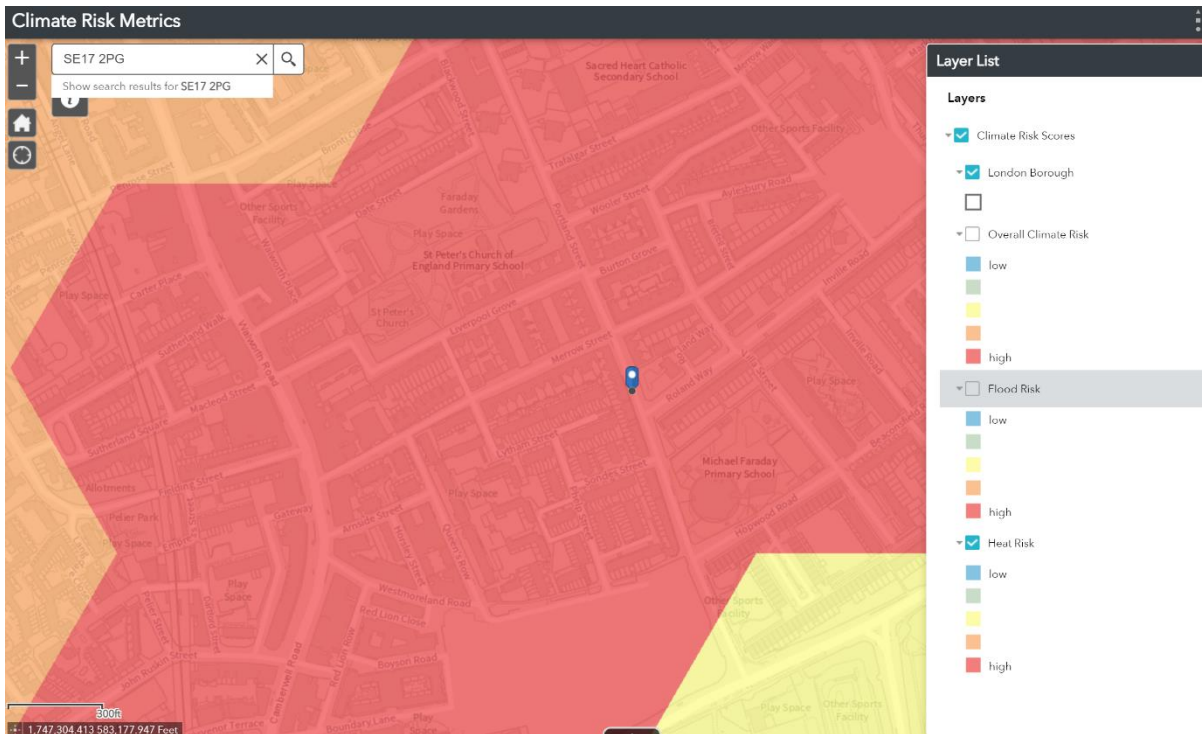
- iii. Use the Layer List at the right side of the screen to show Overall Climate Risk, Flood Risk, and Heat Risk at the postcode or borough you've selected. The map below shows Overall Climate Risk:



This map shows Flood Risk for the same location:



And this map shows Heat Risk for the same location:



Use the map to identify the climate risk in your area as evidence in support of your project, and to consider how your proposed project activities will address the risks highlighted.

3. Tree cover map

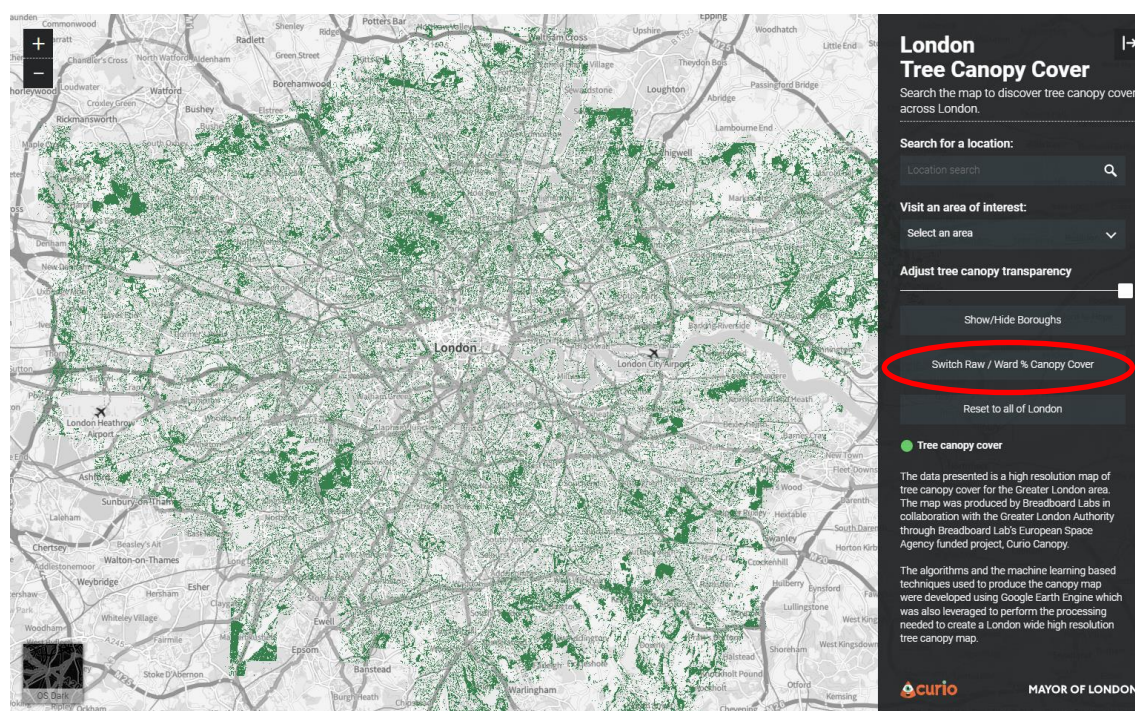
The tree planting theme of Grow Back Greener aims to support tree planting projects in areas of low canopy cover. You can use our tree cover map to find out a percentage tree cover for your ward.

London's tree canopy cover is around 21%. However, tree canopy cover varies hugely across London, from 3% in some wards to over 50% in others. National guidance is that local areas should aim for a minimum 20% canopy cover. We know that 373 wards fall below 20% tree canopy cover. We will prioritise tree planting projects in areas under 20% canopy cover, with a high priority given to those in areas under 10% canopy cover.

3.1 Using the tree canopy cover map

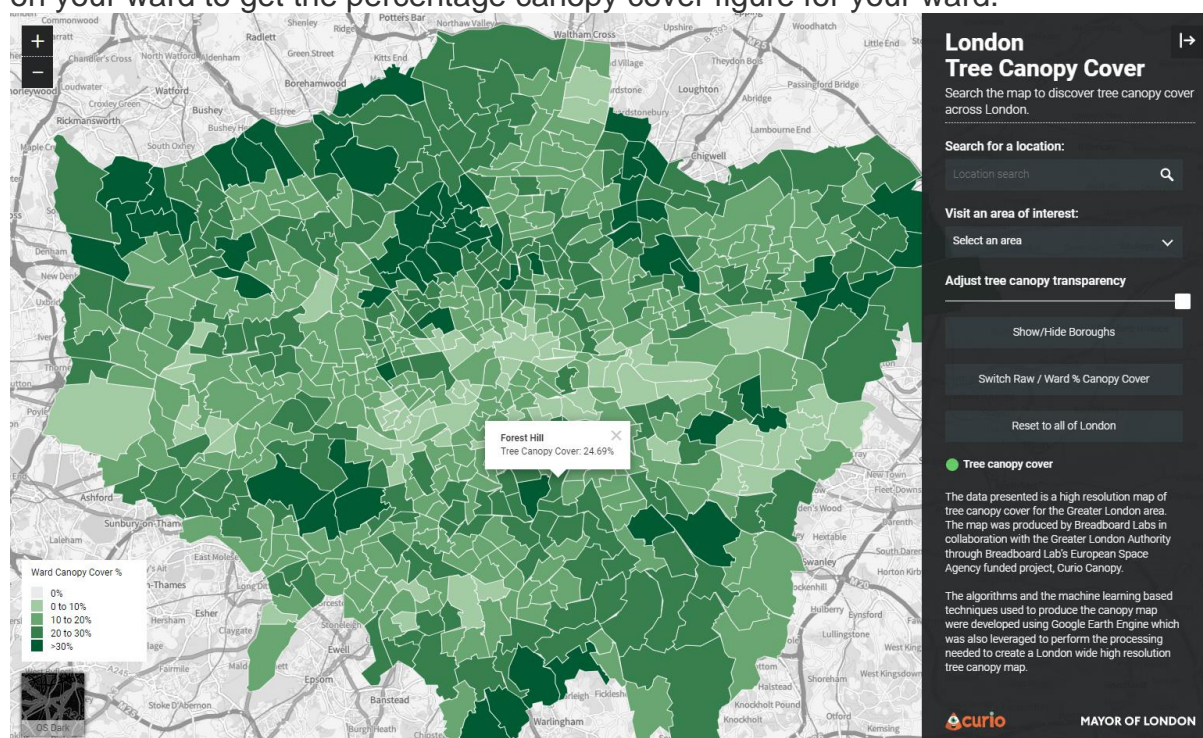
Go to the tree map: <https://apps.london.gov.uk/canopy-cover/>

When you first open the map this is what you will see.



Next, click “Switch Raw / Ward % Canopy Cover” to get the data by ward.

The map will change to show you information about tree canopy cover by ward. Click on your ward to get the percentage canopy cover figure for your ward.



3.2 Background information about tree canopy cover

You can find out more about canopy cover and why it is important here: https://cdn.forestresearch.gov.uk/2022/02/fr_fc_treecanopydata_leaflet.pdf

The London Urban Forest Plan explains more about London's trees and woodlands and how London's urban forest can be protected, maintained and expanded: https://www.london.gov.uk/sites/default/files/londonurbanforestplan_final.pdf

As part of the London Urban Forest Plan we developed a "Ward prioritisation tool" which helps to decide where to focus tree planting. There are multiple factors that influence both the existing variation in tree canopy cover across the capital, and the potential for increasing canopy cover. This includes population density, land use, differences in natural vegetation and existing habitats, soil type and topography.

The ward prioritisation tool includes nine environmental and social factors, including the Urban Heat Island, air pollution, surface water flood risk and deprivation. The tool is in the format of a spreadsheet with filters, allowing users to rank or filter wards by different factors according to their priorities.

This tool is not a prescriptive guide to where canopy cover should be increased but may be a useful tool for boroughs or major landowners who are responsible for tree planting in multiple locations.

<https://data.london.gov.uk/dataset/tree-canopy-cover-prioritisation-tool>